

TECHNICAL MANUAL

**UNIT AND DIRECT SUPPORT MAINTENANCE
REPAIR PARTS AND SPECIAL TOOLS LIST
FOR**

**HEATER, SPACE, MULTIFUEL
WITH BLOWER, 60,000 BTU/HR, 120V
MODEL UH-68G, NSN 4520-01-203-4410
AND MODEL UH-68GI,
NSN 4520-01-297-6803**

Approved for public release; Distribution is unlimited,

***This manual supersedes TM 5-4520-253-23P, 18 June 1987, including all changes.**

**HEADQUARTERS, DEPARTMENT OF THE ARMY
10 JULY 1990**

**UNIT AND DIRECT SUPPORT MAINTENANCE
REPAIR PARTS AND SPECIAL TOOLS LIST
FOR
HEATER, SPACE, MULTIFUEL
WITH BLOWER, 60,000 BTU/HR, 120V
MODEL UH-68G, NSN 4520-01-203-4410
AND MODEL UH-68GI,
NSN 4520-01-297-6803**

Current as of 7 December 1989

Approved for public release. Distribution is unlimited.

REPORTING ERRORS AND RECOMMENDING IMPROVEMENTS

You can help improve this manual. If you find any mistakes or if you know of a way to improve the procedures, please let us know. Mail your letter, DA Form 2028 (Recommended Changes to Publications and Blank Forms), or DA Form 2028-2 located in back of this manual direct to: AMSTR-MCTS, 4300 Goodfellow Boulevard, St. Louis, MO 63120-1798. A reply will be furnished to you.

TABLE OF CONTENTS

		Page	Illus Figure
Section	1. INTRODUCTION	1	
	II. REPAIR PARTS LIST	1-1	
Group 01	Control Box Assembly	1-1	
	Control Box and P. C. Board Assemblies	1-1	1
	P, C. Board Assembly, Model UH-68G	2-1	2
	P. C. Board Assembly, Model UH-68G1	3-1	3
	Control Box Assembly	4-1	4
	Control Box Harness Assembly	5-1	5
Group 02	Heater Case Assembly	6-1	
	Side Panels and Louver Linkage..	6-1	6
	Right Hand Louver Panel Assembly	7-1	7
	Left Hand Louver Panel Assembly	8-1	8
	Heater Case Assembly	9-1	9

*This manual supersedes TM5-4520-253-23P, 18 June 1987, including all changes.

TABLE OF CONTENTS (Continued)

			Page	Illus. Figure
Group	03	Fuel System	10-1	
		Carburetor and Fittings	10-1	10
		Fuel Filter Assembly	11-1	11
		Carburetor Assembly	12-1	12
Group	04	Electrical	13-1	
		Thermostat and Flame Switch Assemblies	13-1	13
		Combustion Blower and Housing	14-1	14
		Blower Motor Subassembly	15-1	15
		Ventilating Air Motor	16-1	16
Group	05	Burner Assembly	17-1	
		Burner Head and Transformer	17-1	17
Group	06	Heat Exchanger	18-1	
		Heat Exchanger and Shields	18-1	18
Group	07	Accessory Items	19-1	
		Accessories,	19-1	19
Group	08	Bulk	Bulk-1	
Section	III.	SPECIAL TOOLS LIST (Nonapplicable)		
Section	IV.	CROSS REFERENCE INDEX		
		NATIONAL STOCK NUMBER INDEX	I-1	
		PART NUMBER INDEX	I-4	
		FIGURE AND ITEM NUMBER INDEX	I-13	

UNIT AND DIRECT SUPPORT MAINTENANCE
REPAIR PARTS AND SPECIAL TOOLS LIST

SECTION I. INTRODUCTION

1. SCOPE. This RPSTL lists and authorizes spares and repair parts; special tools; special test, measurement, and diagnostic equipment (TMDE); and other special support equipment required for performance of Unit and Direct Support Maintenance of the Space Heater. It authorizes the requisitioning, issue, and disposition of spares, repair parts and special tools as indicated by the source, maintenance and recoverability (SMR) codes.

2. GENERAL. In addition to this section, Introduction, this Repair Parts and Special Tools List is divided into the following sections:

a. Section II. Repair Parts List. A list of spares and repair parts authorized by this RPSTL for use in the performance of maintenance. The list also includes parts which must be removed for replacement of the authorized parts. Parts lists are composed of functional groups in ascending alphanumeric sequence with the parts in each group listed in ascending figure and item number sequence. Bulk materials are listed in item name sequence. Repair parts kits are listed separately in their own functional group within Section II. Repair parts for repairable special tools are also listed in this section. Items listed are shown on the associated illustration(s) /figure(s).

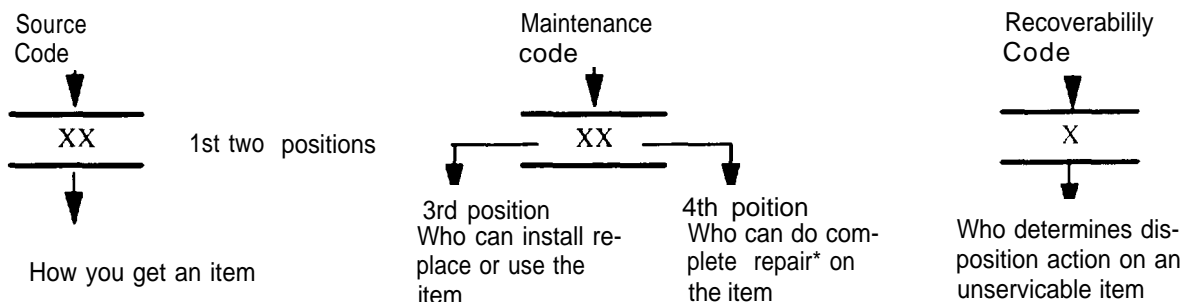
b. Section III. Special Tools List. A list of special tools, special TMDE, and other special support equipment authorized by this RPSTL (as indicated by Basis of Issue (BOI) information in DESCRIPTION AND USABLE ON CODE column) for the performance of maintenance.

c. Section IV. Cross-references Indexes. A list, in National Item Identification Number (NIIN) sequence, of all National stock numbered items appearing in the listing, followed by a list in alphanumeric sequence of all part numbers appearing in the listings. National stock numbers and part numbers are cross referenced to each illustration figure and item number appearance. The figure and item number index lists figure and item number in alphanumeric sequence and cross references NSN, FSCM and part number.

3. EXPLANATION OF COLUMNS (SECTIONS II AND III).

a. ITEM NO. (Column (1)). Indicates the number used to identify items called out in the illustration

b. SMR Code (Column (2)). The Source, Maintenance, and Recoverability (SMR) code is a 5-position code containing supply/requisitioning information, maintenance category authorization criteria, and disposition instruction, as shown in the following breakout:



NOTE

*Complete Repair: Maintenance capacity, capability, and authority to perform all corrective maintenance tasks of the "Repair" function in a use/user environment in order to restore serviceability to a failed item

(1) Source Code. The source code tells you how to get an item needed for maintenance, repair, or overhaul of an end item/equipment. Explanations of source codes follows:

Code	Explanation
PA	
PB	
PC**	
PD	
PE	Stocked items; use the applicable NSN to request/requisition items with these source codes. They are authorized to the category indicated by the code entered in the 3d position of the SMR code.
PF	
PG	
<hr/>	
KD	**NOTE: Items coded PC are subject to deterioration.
KF	
KB	Items with these codes are not to be requested/requisitioned individually. They are part of a kit which is authorized to the maintenance category indicated in the 3d position of the SMR code. The complete kit must be requisitioned and applied.
<hr/>	
	Explanation
MO-(Made at org. AVUM Level	
MF-(Made at DS/ AVUM Level	Items with these codes are not to be requested/requisitioned individually. They must be made from bulk material which is identified by the part number in the DESCRIPTION and US-ABLE ON CODE (UOC) column and listed in the Bulk Material group of the repair parts list in this RPSTL. If the item is authorized to you by the 3d position code of the SMR code, but the source code indicates it is made at a higher level, order the item from the higher level of maintenance.
MH-(Made at GS Level)	
ML—Made at Specialized Repair Activity (SRA))	
MD-(Made at Depot)	

	Explanation
AO -- (Assembled by org/AVUM Level) AF -- (Assembled by DS/AVIM Level) AH -- (Assembled by GS Category) AL -- (Assembled by SRA) AD -- (Assembled by Depot)	Items with these codes are not to be requested/requisitioned individually, The parts that make up the assembled item must be requisitioned or fabricated and assembled at the level of maintenance indicated by the source code. If the 3d position code of the SMR code authorizes you to replace the item, but the source code indicates the items are assembled at a higher level, order the item from the higher level of maintenance.

Code	Explanation
XA --	Do not requisition "XA" -coded item. Order its next higher assembly. (Also, refer to the NOTE below,)
XB --	If an "XB" item is not available from salvage, order it using the FSCM and part number given.
XC --	Installation drawing, diagram, instruction sheet, field service drawing, that is identified by manufacturer's part number,
XD --	Item is not stocked, Order an "XD" -coded item through normal supply channels using the FSCM and part number given, if no NSN is available.

NOTE

Cannibalization or controlled exchange, when authorized, may be used as a source of supply for items with the above source codes, except for those source coded "XA" or those aircraft support items restricted by requirements of AR 750-1.

- (2) Maintenance Code. Maintenance codes tells you the level(s) of maintenance authorized to USE and REPAIR support items. The maintenance codes are entered in the third and fourth positions of the SMR code as follows:
 - (a) The maintenance code entered in the third position tells you the lowest maintenance level authorized to remove, replace, and use an item. The maintenance code entered in the third position will indicate authorization to one of the following levels of maintenance.

Code	Application/Explanation
C	-Crew or operator maintenance done within organizational or aviation unit maintenance,
O	-Organizational or aviation unit category can remove, replace, and use the item.

F -Direct support or aviation intermediate level can remove, replace, and use the item.

H -General support level can remove, replace, and use the item

L -Specialized repair activity can remove, replace, and use the item.

D -Depot level can remove, replace, and use the item.

- (b) The maintenance code entered in the fourth position tells whether or not the item is to be repaired and identifies the lowest maintenance level with the capability to do complete repair (i.e. , perform all authorized repair functions.) NOTE: Some limited repair may be done on the item at a lower level of maintenance, if authorized by the Maintenance Allocation Chart (MAC) and SMR codes. This position will contain one of the following maintenance codes.

Code	Application/Explanation
O	Organizational or (aviation unit) is the lowest level that can do complete repair of the item.
F	-Direct support or aviation intermediate is the lowest level that can do complete repair of the item.
H	-General Support is the lowest level that can do complete repair of the item.
L	-Specialized repair activity is the lowest level that can do complete repair of the item.
D	-Depot is the lowest level that can do complete repair of the item.
Z	-Nonreparable. No repair is authorized.
B	-No repair is authorized. (No parts or special tools are authorized for the maintenance of a "B" coded item). However, the item may be reconditioned by adjusting, lubricating, etc., at the user level.

- (3) Recoverability Code, Recoverability codes are assigned to items to indicate the disposition action on unserviceable items. The recoverability code is entered in the fifth position of the SMR Code as follows:

Recoverability Codes	Application/Explanation
Z	-Nonreparable item. When unserviceable, condemn and dispose of the item at the level of maintenance shown in 3d position of SMR Code.

Recoverability

Codes	Application/Explanation
-------	-------------------------

- | | |
|---|---|
| O | —Reparable item. When uneconomically reparable, condemn and dispose of the item at organizational or aviation unit level |
| F | —Reparable item. When uneconomically reparable, condemn and dispose of the item at the direct support or aviation intermediate level |
| H | —Reparable item. When uneconomically reparable, condemn and dispose of the item at the general support level. |
| D | —Reparable item. When beyond lower level repair capability, return to depot. Condemnation and disposal of item not authorized below depot level |
| L | —Reparable item. Condemnation and disposal not authorized below specialized repair activity (SRA). |
| A | —Item requires special handling or condemnation procedures because of specific reasons (e.g. , precious metal content, high dollar value, critical material, or hazardous material). Refer to appropriate manuals/directives for specific instructions. |

c. FSCM (Column (3)). The Federal Supply Code for Manufacturer (FSCM) is a 5-digit numeric code which is used to identify the manufacturer, distributor, or Government agency, etc., that supplies the item

d. PART NUMBER (Column (4)). Indicates the primary number used by the manufacturer, (individual, company, firm, corporation, or Government activity), which controls the design and characteristics of the item by means of its engineering drawings, specifications standards, and inspection requirements to identify an item or range of items.

NOTE

When you use an NSN to requisition an item, the item you receive may have a different part number from the part ordered.

e. DESCRIPTION AND USABLE ON CODE (UOC) (Column (5)). This column includes the following information:

- (1) The Federal item name and, when required, a minimum description to identify the item.
- (2) The physical security classification of the item is indicated by the parenthetical entry, e.g , Phy Sec CI - Confidential, Phy Sec CI (S) - Secret, Phy Sec CI (T) – Top Secret.
- (3) Items that are included in kits and sets are listed below the name of the kit or set.
- (4) Spare/repair parts that make up an assembled item are listed immediately following the assembled item line entry,
- (5) Part numbers for bulk materials are referenced in this column in the line item entry for the item to be manufactured/fabricated.
- (6) When the item is not used with all serial numbers of the same model, the effective serial numbers are shown on the last line(s) of the description (before UOC).

- (7) The usable encode, when applicable (see paragraph 5, Special information).
- (8) In the Special Tools List section, the basis of issue (BOI) appears as the last line(s) in the entry for each special tool, special TM DE, and other special support equipment. When density of equipments supported exceeds density spread indicated in the basis of issue, the total authorization is increased proportionately.
- (9) The statement "END OF FIGURE" appears just below the last item description in Column 5 for a given figure in both Section II and Section III.
- (10) The indenture, shown as dots appearing before the repair part, indicates that the item is a repair part of the next higher assembly.

f. QTY (Column (6)). The QTY (quantity per figure column) indicates the quantity of the item used in the breakout shown on the illustration figure, which is prepared for a functional group, subfunctional group, or an assembly. A "V" appearing in this column in lieu of a quantity indicates that the quantity is variable and may vary from application to application.

4. EXPLANATION OF COLUMNS (SECTION IV).

a. NATIONAL STOCK NUMBER (NSN) INDEX.

- (1) STOCK NUMBER column. This column lists the NSN by National item identification number (NIIN) sequence. The NIIN consists of the last nine digits of the NSN
NSN, i.e. (5305-01-574-1 467),
NIIN

When using this column to locate an item, ignore the first 4 digits of the NSN.
However, the complete NSN should be used when ordering items by stock number

- (2) FIG. column. This column lists the number of the figure where the item is identified/located
The figures are in numerical order in Section II and Section III.
- (3) ITEM column. The item number identifies the item associated with the figure listed in the adjacent FIG. column. This item is also identified by the NSN listed on the same line.

b. PART NUMBER INDEX. Part numbers in this index are listed by part number in ascending alphanumeric sequence (i e. , vertical arrangement of letter and number combination which places the first letter or digit of each group in order A through Z, followed by the numbers 0 through 9 and each following letter or digit in like order).

- (1) FSCM column. The Federal Supply Code for Manufacturer (FSCM) is a 5-digit numeric code used to identify the manufacturer, distributor, or Government agency, etc. , that supplies the item.
- (2) PART NUMBER column. Indicates the primary number used by the manufacturer (individual firm, corporation, or Government activity), which controls the design and characteristics of the item by means of its engineering drawings, specifications standards, and inspection requirements to identify an item or range of items.
- (3) STOCK NUMBER column. This column lists the NSN for the associated part number and manufacturer identified in the PART NUMBER and FSCM columns to the left.

- (4) FIG. column. This column lists the number of the figure where the item is identified/located in Sections II and III.
- (5) ITEM column. The item number is that number assigned to the item as it appears in the figure referenced in adjacent figure number column.

c. FIGURE AND ITEM NUMBER INDEX.

- (1) FIG. column. This column lists the number of the figure where the item is identified/located in Section II and III.
- (2) ITEM column. The item number is that number assigned to the item as it appears in the figure referenced in the adjacent figure number column.
- (3) STOCK NUMBER column. This column lists the NSN for the item.
- (4) FSCM column. The Federal Supply Code for Manufacturer (FSCM) is a 5-digit numeric code used to identify the manufacturer, distributor, or Government agency, etc., that supplies the item.
- (5) PART NUMBER column. Indicates the primary number used by the manufacturer (individual, firm, corporation, or Government activity), which controls the design and characteristics of the item by means of its engineering drawings, specifications standards, and inspection requirements to identify an item or range of items.

5. SPECIAL INFORMATION.

a. USABLE ON CODE. The usable on code appears in the lower left corner of the Description column heading. Usable on codes are shown as “UOC:” in the Description Column (justified left) on the last line applicable item description/nomenclature. Uncoded items are applicable to all models.

CODE	USED ON
DYS	Model UH-68G
ETG	Model UH-68G1

b. ASSOCIATED PUBLICATIONS. The publications listed below pertains to the Space Heater and it's components.

Publication	Short Title
TM 5-4520-253-13	Space Heater

6. HOW TO LOCATE REPAIR PARTS.

a. When National Stock Number or Part Number is NOT known.

- (1) First. Using the table of contents, determine the assembly group or subassembly group 10 which the item belongs, This is necessary since figures are prepared for assembly groups and subassembly groups, and listings are divided into the same groups.
- (2) Second. Find the figure covering the assembly group or subassembly group to which the item belongs.

(3) Third. Identify the item on the figure and note the item number.

(4) Fourth. Refer to the Repair Parts List for the figure to find the part number for the item number noted on the figure.

(5) Fifth. Refer to the Part Number Index to find the NSN, if assigned.

b. When National Stock Number or Part Number is Known:

(1) First. Using the Index of National Stock Numbers and Part Numbers, find the pertinent National Stock Number or Part Number. The NSN index is in National Item Identification Number (NIIN) sequence (see c-4a,(1)), The part numbers in the Part Number index are listed in ascending alphanumeric sequence (see c-4.b). Both indexes cross-reference you to the illustration figure and item number of the item you are looking for

(2) Second. After finding the figure and item number, verify that the item is the one you are looking for, then locate the item number in the repair parts list for the figure.

7. Abbreviations. Abbreviations used in this manual are listed in MIL-STD-12

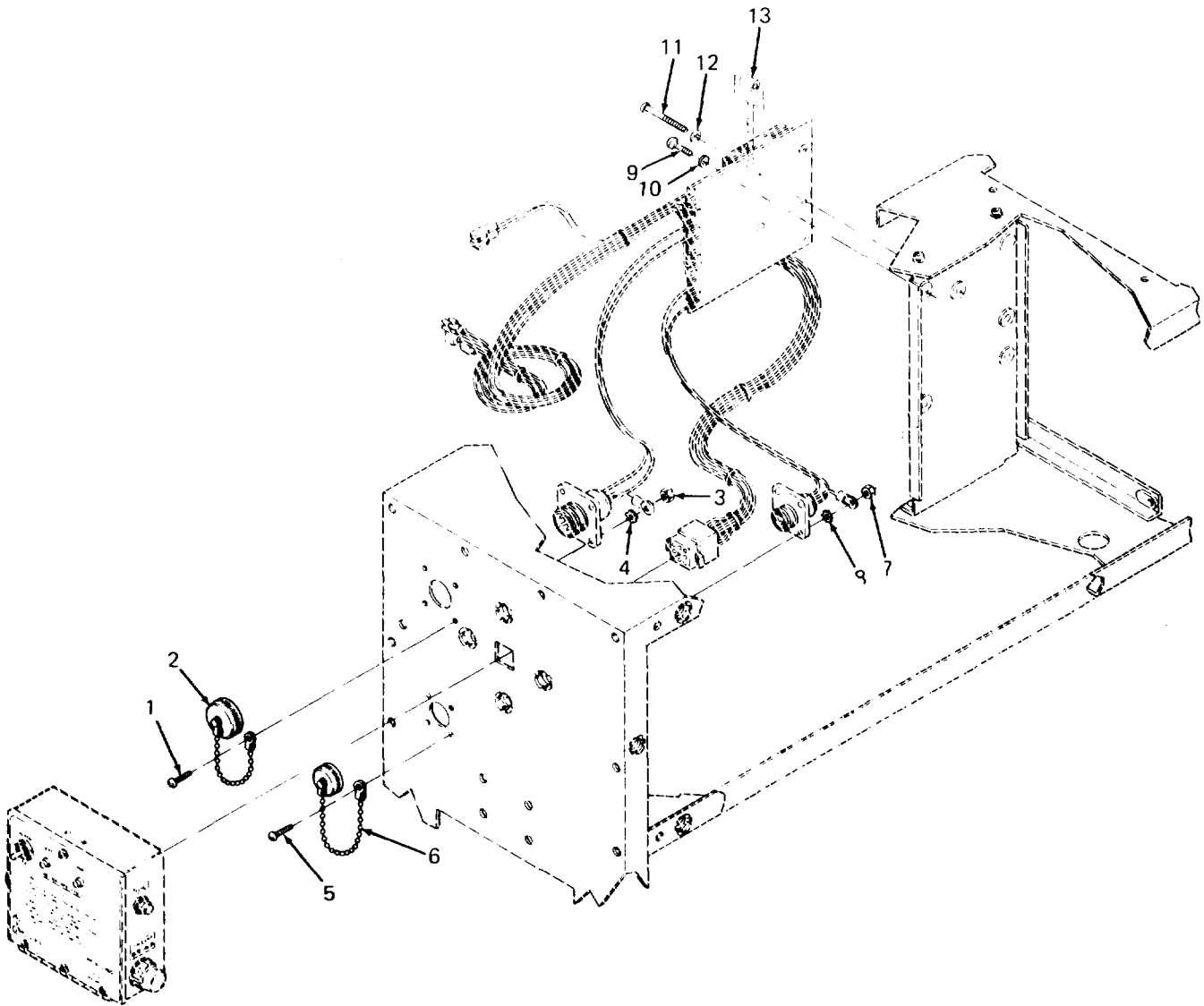


Figure 1. Control Box and P.C. Board Assemblies

SECTION II (1)	ITEM (2)	(3)	TM5-4520-253-23P (4)	(5)	(6)
NO	SMR CODE	FSCM	PART NUMBER	DESCRIPTION AND USABLE ON CODE (UOC)	QTY
GROUP 01 CONTROL BOX ASSEMBLY					
FIG. 1 CONTROL BOX AND P.C. BOARD ASSEMBLIES					
1	PAOZZ	96906	MS35206-215	SCREW,MACHINE ROUND HEAD,#4-40 X 3/ 8 IN. LG	4
2	PAOZZ	96906	MS25043-18DA	COVER,ELECTRICAL CO.	1
3	PAOZH	96906	MS35649-242	NUT,PLAIN,HEXAGON #4-40	4
4	PAOZZ	96906	MS35335-29	WASHER,LOCK EXTERNAL TOOTH,#A4	4
5	PAOZZ	96906	MS35206-215	SCREW,MACHINE ROUND HEAD,#4-40 X 3/ 8 IN. LG.	4
6	PAOZZ	96906	MS25043-14DA	COVER,ELECTRICAL CO	1
7	PAOZH	96906	MS35649-242	NUT,PLAIN,HEXAGON #4-40	4
8	PAOZZ	96906	MS35335-29	WASHER,LOCK EXTERNAL TOOTH,#4	4
9	PAOZZ	96906	MS35206-227	SCREW,MACHINE PAN HEAD	4
10	PAOZZ	96906	MS35333-37	WASHER,LOCK INTERNAL TOOTH	4
11	PAOZZ	96906	MS35206-231	SCREW,MACHINE ROUND HEAD,#6-32 X 1.75 IN. LG.	2
12	PAOZZ	96906	MS35333-37	WASHER,LOCK INTERNAL TOOTH	2
13	XBOZZ	92878	168227	SPACER	2
END OF FIGURE					

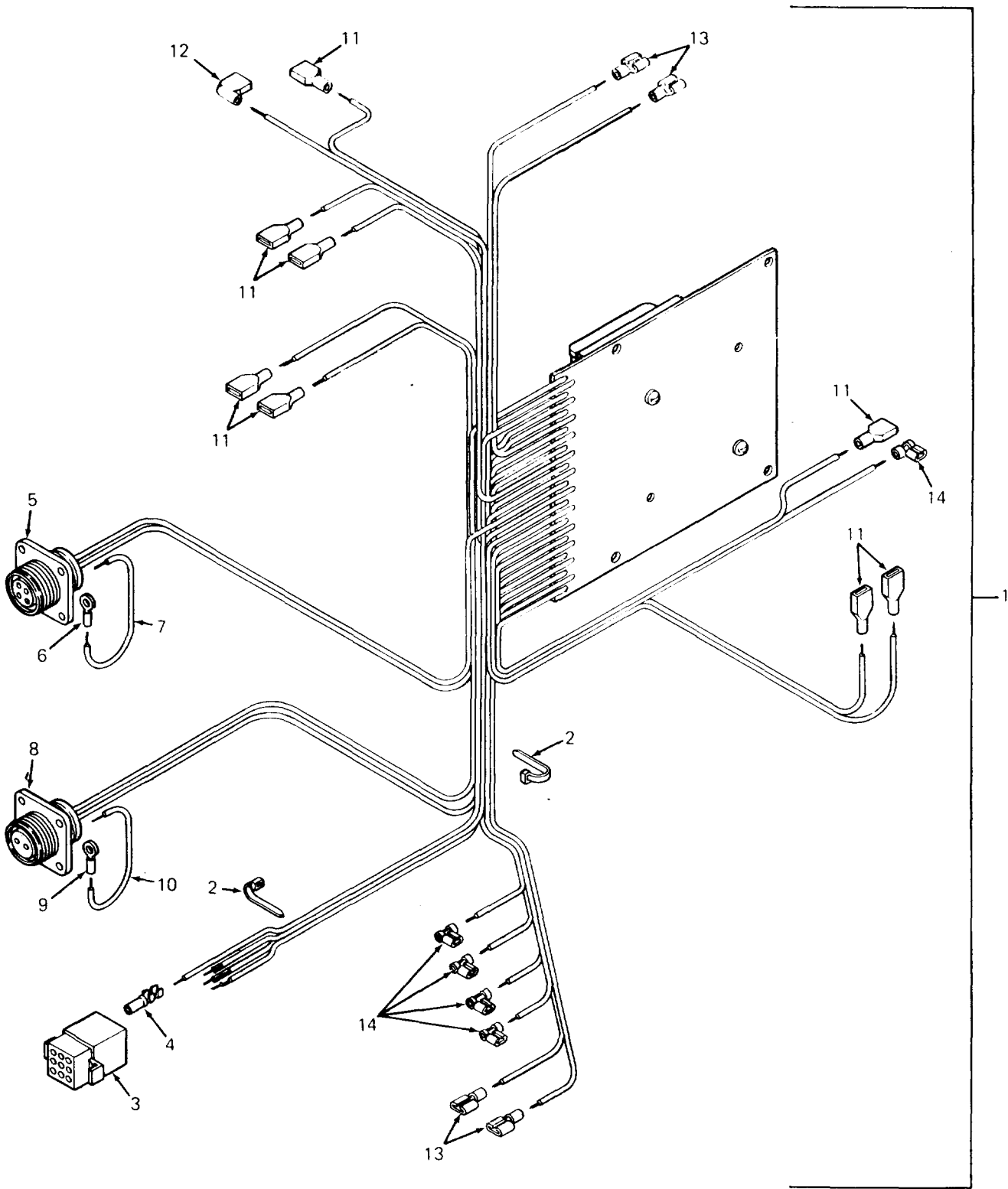


Figure 2. P.C. Board Assembly, Model UH-68G

SECTION II (1) ITEM NO	(2) SMR CODE	(3) FSCM	TM5-4520-253-23P (4) PART NUMBER	(5) DESCRIPTION AND USABLE ON CODE (UOC)	(6) QTY
GROUP 01 CONTROL BOX ASSEMBLY					
FIG. 2 P.C. BOARD ASSEMBLY, MODEL UH-68G					
1	PBFFZ	92878	168257	PRINTED CIRCUIT BOA UOC:DYS	1
2	PAOZZ	96906	MS3367-1-9	STRAP, TIEDOWN, ELECT UOC:DYS	15
3	XDFZZ	13499	372-5909-720	CONNECTOR, RECEPTACL CONTROL BOX UOC:DYS	1
4	XBFZZ	237264	1189-02-09-1103	TERMINAL UOC:DYS	8
5	PAFZA	96906	MS3103-14S-9S	CONNECTOR, RECEPTACL PUMP UOC:DYS	1
6	PAFZF	96906	MS25036-102	TERMINAL, LUG TONGUE, INSULATED, 16-14 AWG UOC:DYS	1
7	MFFZZ	92878	10768-12	WIRE, ELECTRICAL, 16 GA., GREEN, 4 IN. LG. MFR. FROM P/N MM3412 (99974) UOC:DYS	1
8	PAFZA	96906	MS3103-18-10P	CONNECTOR, RECEPTACL UOC:DYS	1
9	PAFZF	96906	MS25036-102	TERMINAL, LUG TONGUE, INSULATED, 16-14 AWG UOC:DYS	1
10	MFFZZ	92878	10768-12	WIRE, ELECTRICAL 16 GA., GREEN, R IN. LG. MFR. FROM P/N MM3412 (99974) UOC:DYS	1
11	XDFZZ	14726	SO5075	CONNECTOR, PLUG, ELEC NYLON, FULLY INSULATED, 16-14 AWG UOC:DYS	8
12	PAFZZ	14726	SO5363SFT	TERMINAL, QUICK DISC FULLY INSULATED, FEMALE, QUICK DISCONNECT, 16-14 AWG UOC:DYS	1
13	PAFZZ	14726	SO9718SF	TERMINAL, QUICK DISC DISCONNECT, FEMALE, 16-14 AWG UOC:DYS	4
14	PAFZZ	59730	B14-250A	TERMINAL, QUICK DISC UOC:DYS	5

END OF FIGURE

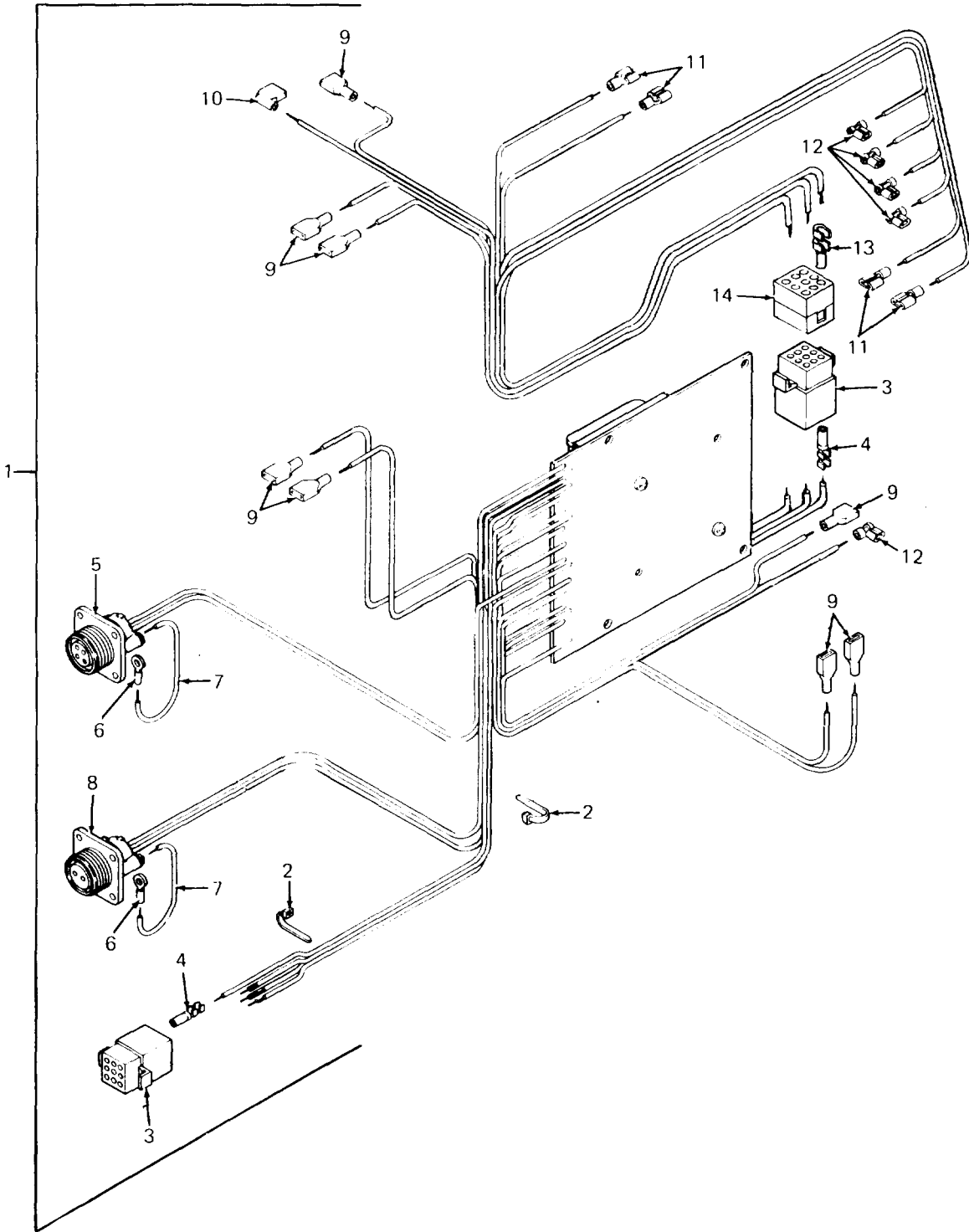


Figure 3. P.C. Board Assembly, Model UH-68G1

SECTION II (1) ITEM NO	(2) SMR CODE	(3) FSCM	TM5-4520-253-23P (4) PART NUMBER	(5) DESCRIPTION AND USABLE ON CODE (UOC)	(6) QTY
GROUP 01 CONTROL BOX ASSEMBLY					
FIG. 3 P.C. BOARD ASSEMBLY, MODEL UH-68G1					
1	PBFFZ	92878	16825701	PRINTED CIRCUIT BOA UOC:ETG	1
2	PAOZZ	96906	MS3367-1-9	STRAP, TIEDOWN, ELECT UOC:ETG	15
3	XDFZZ	13499	372-5909-720	CONNECTOR, RECEPTACL CONTROL BOX UOC:ETG	1
4	XBFZZ	27264	1189-02-09-1103	TERMINAL UOC:ETG	8
5	PAFZZ	96906	MS3100R-14S-9S	CONNECTOR, RECEPTACL PUMP UOC:ETG	1
6	PAFZF	96906	MS25036-102	TERMINAL, LUG TONGUE, INSULATED, 16-14 AWG UOC:ETG	1
7	MFFZZ	92878	10768-12	WIRE, ELECTRICAL, 16 GA., GREEN, 4 IN. LG. MFR FROM P/N MM3412 (99974) UOC:ETG	1
8	PAFZZ	96906	MS3450W18-10P	CONNECTOR, RECEPTACL UOC:ETG	1
9	XDFZZ	14726	SO5075	CONNECTOR, PLUG, ELEC NYLON, FULLY INSULATED, 16-14 AWG UOC:ETG	8
10	PAFZZ	14726	SO5363SFT	TERMINAL, QUICK DISC FULLY INSULATED, FEMALE, QUICK DISCONNECT, 16-14 AWG UOC:ETG	1
11	PAFZZ	14726	S09718SF	TERMINAL, QUICK DISC DISCONNECT, FEMALE, 16-14 AWG UOC:ETG	4
12	PAFZZ	59730	B14-250A	TERMINAL, QUICK DISC UOC:ETG	5
13	XBFZZ	27264	1190-02-09-2103	TERMINAL UOC:ETG	8
14	XBOZZ	27264	03-09-2092	PLUG UOC:ETG	1
END OF FIGURE					

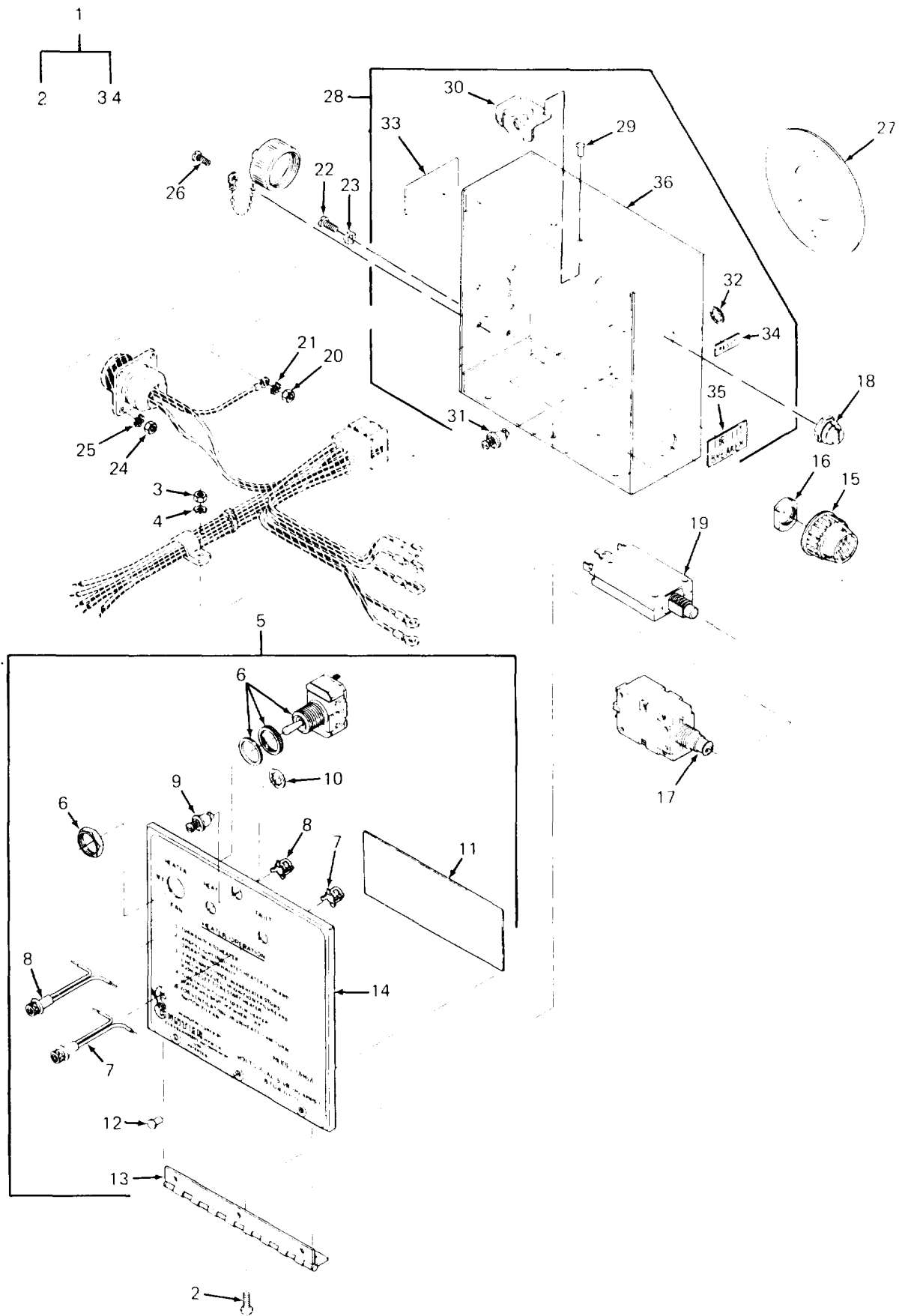


Figure 4. Control Box Assembly

SECTION II (1) ITEM NO	(2) SMR CODE	(3) FSCM	TM5-4520-253-23P (4) PART NUMBER	(5) DESCRIPTION AND USABLE ON CODE (UOC)	(6) QTY
GROUP 01 CONTROL BOX ASSEMBLY					
FIG. 4 CONTROL BOX ASSEMBLY					
1	XBOOO	92878	168216	CONTROL BOX ASSEMBLY	1
2	PAOZZ	96906	MS35206-228	SCREW,MACHINE ROUND HEAD,#6-32 X 3/8 IN. LG	3
3	PAOZZ	96906	MS35649-262	NUT,PLAIN,HEXAGON	3
4	PAOZZ	96906	MS35335-30	WASHER,LOCK EXTERNAL TOOTH,#6	3
5	XBOOO	92878	168218	COVER SUBASSEMBLY, CONTROL BOX	1
6	PAOZF	96906	MS35059-21	SWITC,TOGGLE	1
7	PAOZZ	55292	700-1-7-RA9X	LIGHT,INDICATOR (RED) INCLUDES BARREL FASTENER	1
8	PAOZZ	55292	700-1-10-RA9X	LIGHT,INDICATOR (WHITE) INCLUDES BARRELL FASTENER	1
9	PAOZZ	71286	26S8-3	STUD ASSEMBLY,TURNL	1
10	PAOZZ	71286	2600-LW	WASHER,LOCK INTERNAL TOOTH	1
11	XDOZZ	92878	168530	LABEL,CAUTION	1
12	PAOZZ	96906	MS16535-115	RIVET,TUBULAR	3
13	XBOZZ	92878	68313	HINGE,CONTROL BOX	1
14	XBOZZ	92878	168271	COVER,CONTROL BOX	1
15	PAOZZ	97539	4082	BOOT,DUST AND MOIST INCLUDES BONDED INTERNAL NUT	1
16	XBOZZ	97539	7	ADAPTER,SEAL	1
17	PAOZZ	96906	MS25244-20	CIRCUIT BREAKER	1
18	PAOZZ	06402	N 1 480 08	BOOT,RESET SEAL INCLUDES BONDED INTERNAL KNURLED NUT	1
19	PAOZZ	06402	45-700-IG1-P10-A 3-010	CIRCUIT BREAKER	1
20	PAOZZ	96906	MS35649-262	NUT,PLAIN,HEXAGON	1
21	PAOZZ	96906	MS35335-30	WASHER,LOCK EXTERNAL TOOTH,#6	1
22	PAOZZ	96906	MS35206-230	SCREW,MACHINE ROUND HEAD,#6-32 X 1/2 IN. LG	1
23	PAOZZ	96906	MS45904-54	WASHER,LOCK EXTERNAL/INTERNAL TOOTH,#6	1
24	PAOZH	96906	MS35649-242	NUT,PLAIN,HEXAGON #4-40	4
25	PAOZZ	96906	MS35335-29	WASHER,LOCK EXTERNAL TOOTH,#4	4
26	PAOZZ	96906	MS35206-214	SCREW,MACHINE ROUND HEAD,#4-40 X 5/16 IN. LG	4
27	XDOZZ	92878	168046	GASKET	1
28	XBOZZ	92878	168217	CONTROL BOX SUBASSEMBLY	1
29	PAOZZ	96906	MS16535-54	RIVET,TUBULAR	2
30	XBOZZ	71286	212-12B-R	RECEPTACLE,TURNLOCK	1
31	XDOZZ	71286	26S8-2	STUD,ASSEMBLY,TURNL	2
32	PAOZZ	71286	2600-LW	WASHER,LOCK INTERNAL TOOTH	2
33	PAOZZ	92878	68708-05	DECAL	1
34	PAOZZ	92878	168156	LABEL	1
35	PAOZZ	92878	168524	LABEL BREAKER	1
36	XBOZZ	92878	168249	CONTROL BOX	1

END OF FIGURE

1

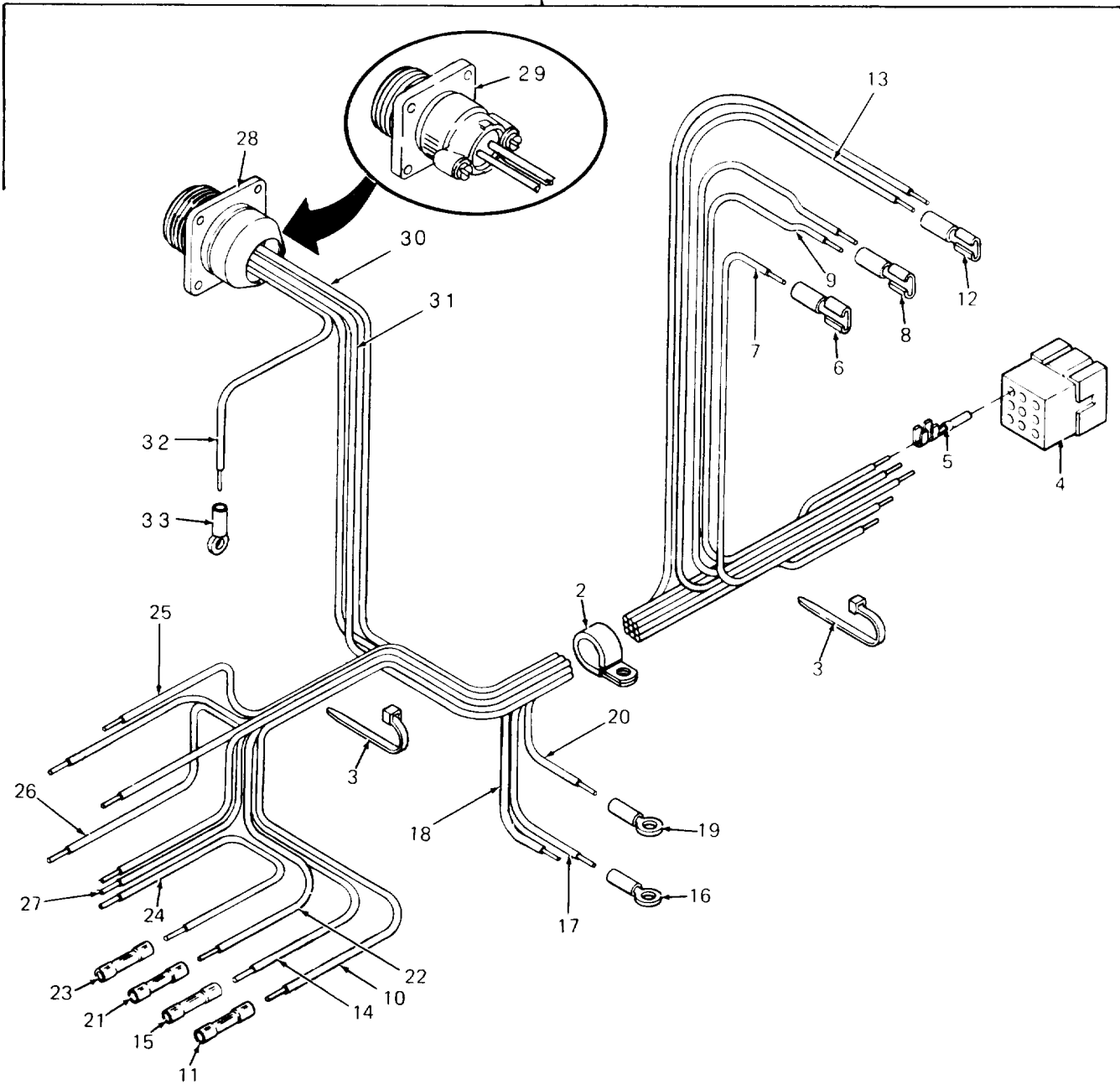


Figure 5. Control Box Harness Assembly

SECTION II (1) ITEM NO	(2) SMR CODE	(3) FSCM	TM5-4520-253-23P (4) PART NUMBER	(5) DESCRIPTION AND USABLE ON CODE (UOC)	(6) QTY
GROUP 01 CONTROL BOX ASSEMBLY					
FIG. 5 CONTROL BOX HARNESS ASSEMBLY					
1	XBOOO	92878	168225	HARNESS,CONTROL BOX	1
2	PAOZZ	78553	C-4980-A-4-35	CLAMP,LOOP	2
3	PAOZZ	96906	MS3367-1-9	STRAP,TIEDOWN,ELECT	2
4	XBOZZ	27264	03-09-2092	PLUG	1
5	XBOZZ	27264	1190-02-09-2103	TERMINAL,FEMALE	8
6	PAOZZ	14726	S09718SF	TERMINAL,QUICK DISC DISCONNECT, FEMALE,16-14 AWG	1
7	MOOZZ	92878	10799	WIRE,ELECTRICAL, 20 GA.,GREY,11 1/4 IN.LG.MFR.FROM P/N M16878/ 1BGE8 (81349)	1
8	PAOZZ	14726	S09718SF	TERMINAL,QUICK DISC DISCONNECT, FEMALE,16-14 AWG	1
9	MOOZZ	92878	10770-23	WIRE,ELECTRICAL, 16 GA.,YELLOW,6 3/4 IN.LG.MFR.FROM P/N M16878/1BJE4 (81349)	1
10	MOOZZ	92878	10795-03	WIRE,ELECTRICAL, 20 GA.,YELLOW,8 3/4 IN.LG.MFR.FROM P/N M16878/ 1BGE4 (81349)	1
11	XDOZZ	00779	34070	SPLICE,CONDUCTOR 22-16AWG	1
12	PAOZZ	14726	S09718SF	TERMINAL,QUICK DISC DISCONNECT, FEMELE,16-14 AWG	1
13	MOOZZ	92878	10739-03	WIRE,ELELCTRICAL, 20 GA.,VIOLET,8 3/4 IN.LG.MFR.FROM P/N M16878/1BGE7 (81349)	1
14	MOOZZ	92878	10739-03	WIRE,ELECTRICAL, 20 GA.,VIOLET,8 3/4 IN.LG.MFR.FROM P/N M16878/1BGE7 (81349)	1
15	XDOZZ	00779	34070	SPLICE,CONDUCTOR 22-16 AWG	1
16	PAOZZ	96906	MS25036-108	TERMINAL.LUG NO. 10 STUD,16-14 AWG.,INSULATED BARREL	1
17	MOOZZ	92878	10767-09	WIRE,ELECTRICAL, 16 GA.,BROWN,5 IN.LG.,MFR.FROM P/N M16878/1BJE1 (81349)	1
18	MOOZZ	92878	10767-05	WIRE,ELECTRICAL, 16 GA.,BROWN,8 IN.LG.,MFR.FROM P/N M16878/1BJE1 (81349)	1
19	PAOZZ	96906	MS25036-108	TERMINAL.LUG NO.10 STUD.16-14 AWG.,ISULATED BARREL	1
20	MOOZZ	92878	10772-11	WIRE,ELECTRICAL 16 GA.,BLACK,5 IN.LG.MFR.FROM P/N M16878/1BJE0 (81349)	1
21	XDOZZ	00779	34070	SPLICE,CONDUCTOR 22-16 AWG	1
22	MOOZZ	92878	10782-13	WIRE,ELECTRICAL, 20 GA.,WHITE,7 1/2 IN.LG.MFR.FROM P/N M16878/1BGE9 (81349)	1
23	XDOZZ	00779	34070	SPLICE,CONDUCTOR 22-16 AWG1	1
24	MOOZZ	92878	10736-06	WIRE,ELECTRICAL, 20 GA.,ORANGE,3	1

SECTION II (1)	ITEM (2)	(3)	TM5-4520-253-23P (4)	(5)	(6)
NO	SMR CODE	FSCM	PART NUMBER	DESCRIPTION AND USABLE ON CODE (UOC)	QTY
25	MOOZZ	92878	10774-30	IN.LG.,MFR.FROM P/N M16878/1BGE3 (81349) WIRE,ELECTRICAL, 16 GA.,RED,10 3/ 4 IN.LG.MFR.FROM P/N M16878/1BJE2 (81349)	1
26	MOOZZ	92878	10799-06	WIRE,ELECTRICAL, 20 GA.,GREY,9 3/ 4 IN.LG.MFR.FROM P/N M16878/1BGE8 (81349)	1
27	MOOZZ	82878	10736-02	WIRE,ELECTRICAL 20 GA.,ORANGE,9 1/2 IN.LG.,MFG.FROM P/N M16878/ 1BGE3 (81349)	1
28	XDOZZ	96906	MS3103-14S7S	CONNECTOR,RECEPTAL (ROOM THERMO)	1
29	XDOZZ	96906	MS3100R-14S-7S	CONNECTOR,RECEPTACL (ROOM THERMO)	1
30	MOOZZ	92878	10766-12	UOC:ETG WIRE,ELECTRICAL 16 GA.,ORANGE,9 1/2 IN.LG.MFR.FROM P/N M16878/1BJE3 (81349)	1
31	MOOZZ	92878	10785-01	WIRE,ELECTRICAL, 20GA.,GREEN,5 IN.LG.FROM P/N M16878/1BGE5 (81349)	1
32	MOOZZ	92878	10785-03	WIRE,ELECTRICAL 20 GA.,GREEN,3 IN.LG.,MFR.FROM P/N M16878/1BGE5 (81349)	1
33	PAOZF	96906	MS25036-102	TERMINAL,LUG TONGUE,INSULATED,16- 14 AWG	1

END OF FIGURE

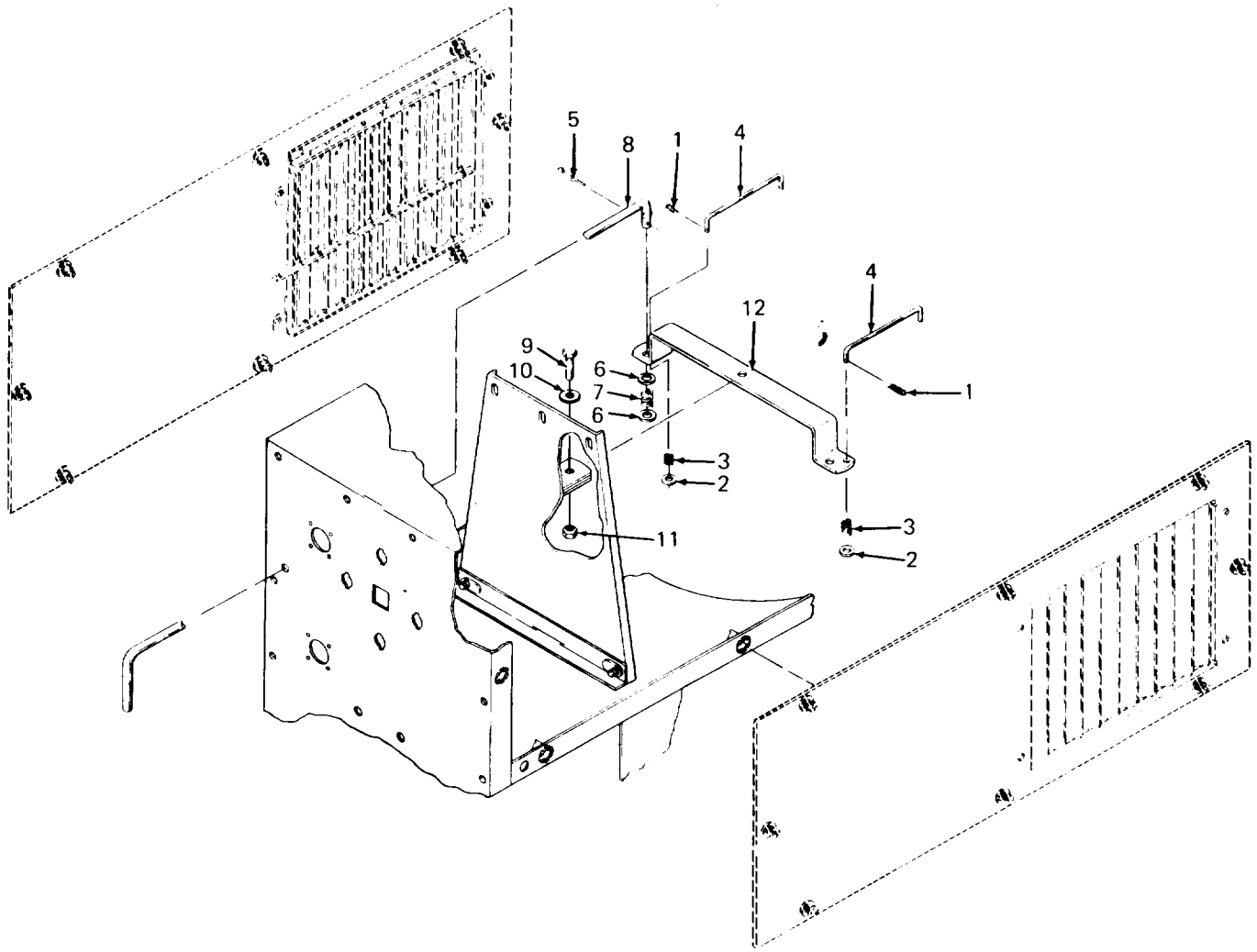


Figure 6. Side Panels and Louver Linkage

SECTION 11 (1)	(2)	(3)	TM5-4520-253-23P (4)	(5)	(6)
ITEM NO	SMR CODE	FSCM	PART NUMBER	DESCRIPTION AND USABLE ON CODE (UOC)	QTY
GROUP 02 HEATER CASE ASSEMBLY					
FIG. 6 SIDE PANELS AND LOUVER LINKAGE					
1	PAOZZ	65029	26	PIN, LOCK	2
2	PAOZZ	96906	MS27183-5	WASHER, FLAT	2
3	PBOZZ	92878	68711	SPRING, HELICAL, COMP	2
4	XBOZZ	92878	68662-01	LINKAGE, LOUVER	2
5	PAOZZ	96906	MS24665-285	PIN, COTTER 3/32 IN. DIA. X 1 IN. LG	1
6	XBOZZ	92878	47172	WASHER, FLAT, 17/64 I.D. X 7/16 O.D.	2
7	PAOZ	24658	80861-45	SPRING, HELICAL, COMP	1
8	XBOZZ	92878	68671-01	HANDLE, LOUVER OPERATING	1
9	PAOZH	96906	MS90725-6	SCREW, CAP, HEXAGON H HEXAGON HEAD	1
10	XBOZZ	92878	65838	WASHER, FLAT 1/4 I.D. X 1 O.D	1
11	PAOZZ	96906	MS51922-1	NUT, SELF-LOCKING, HE 1/4-20	1
12	XBOZZ	92878	68754	BAR, PIVOT, CONTROL	1

END OF FIGURE

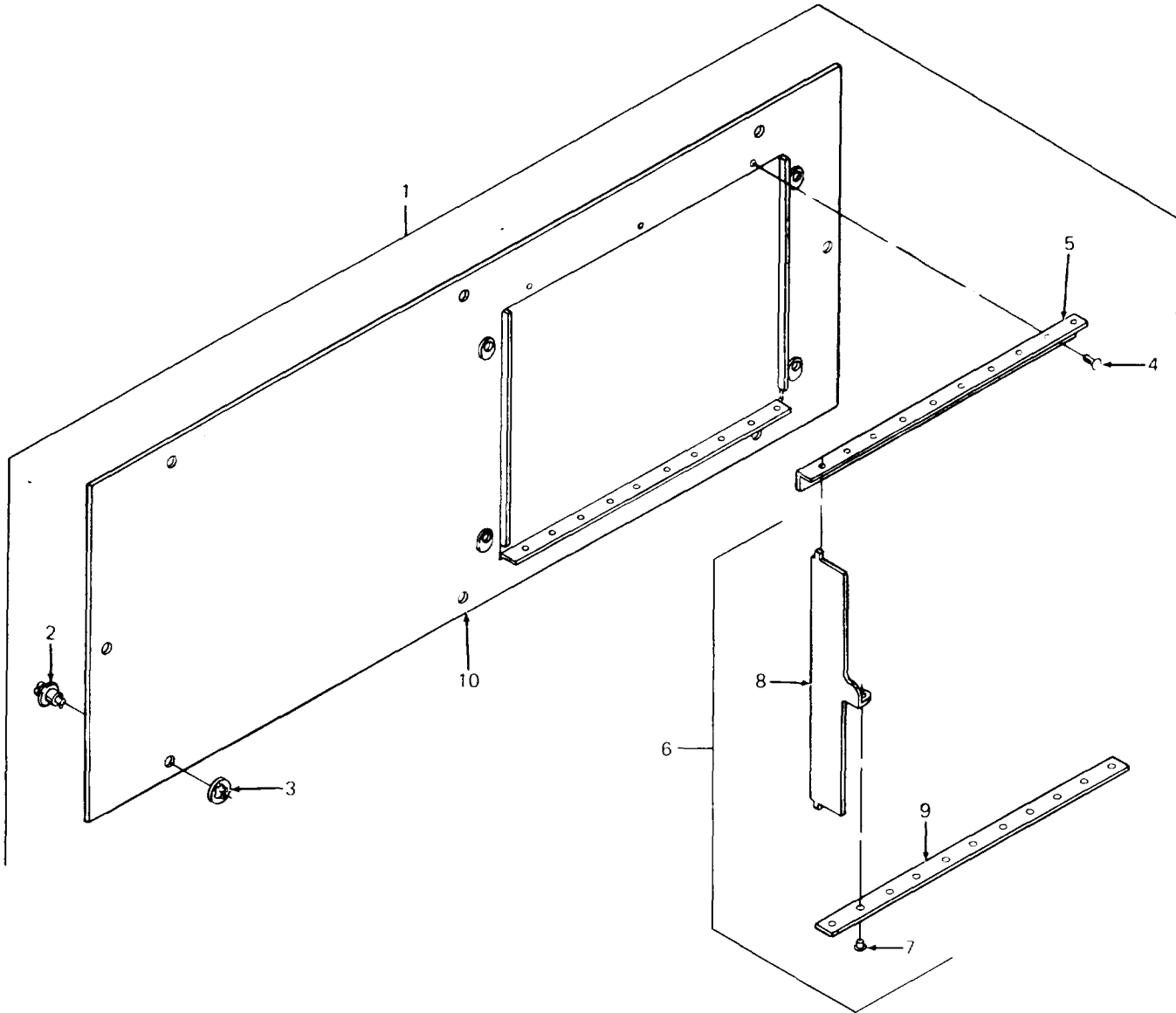


Figure 7. Right Hand Louver Panel Assembly

SECTION II					
(1)	(2)	(3)	(4)	(5)	(6)
ITEM NO	SMR CODE	FSCM	PART NUMBER	DESCRIPTION AND USABLE ON CODE (UOC)	QTY
TM5-4520-253-23P					
GROUP 02 HEATER CASE ASSEMBLY					
FIG. 7 RIGHT HAND LOUVER PANEL ASSEMBLY					
1	XBOOO	92878	168235	PANEL ASSEMBLY, RIGHT HAND LOUVER	1
2	PAOZZ	71286	26S8-3	STUD ASSEMBLY,TURNL	8
3	PAOZZ	71283	2600-LW	WASHER,LOCK INTERNAL TOOTH	8
4	PAOZZ	96906	MS16535-133	RIVET,TUBULAR 1/8 IN. DIA. X 5/32 IN. LG.,BRASS	3
5	XBOZZ	92878	68761	LOCK,LOUVER,RIGHT HAND	1
6	XBOOO	92878	2-68756	LOUVER SUBASSEMBLY, RIGHT HAND	1
7	PAOZZ	96906	MS16535-115	RIVET,TUBULAR	10
8	XAOZZ	92878	168149	LOUVER,RIGHT HAND	10
9	XAOZZ	92878	68748	BAR,LOUVER CONTROL	1
10	XBOZZ	92878	168233	PANEL,LOUVER, RIGHT HAND	1

END OF FIGURE

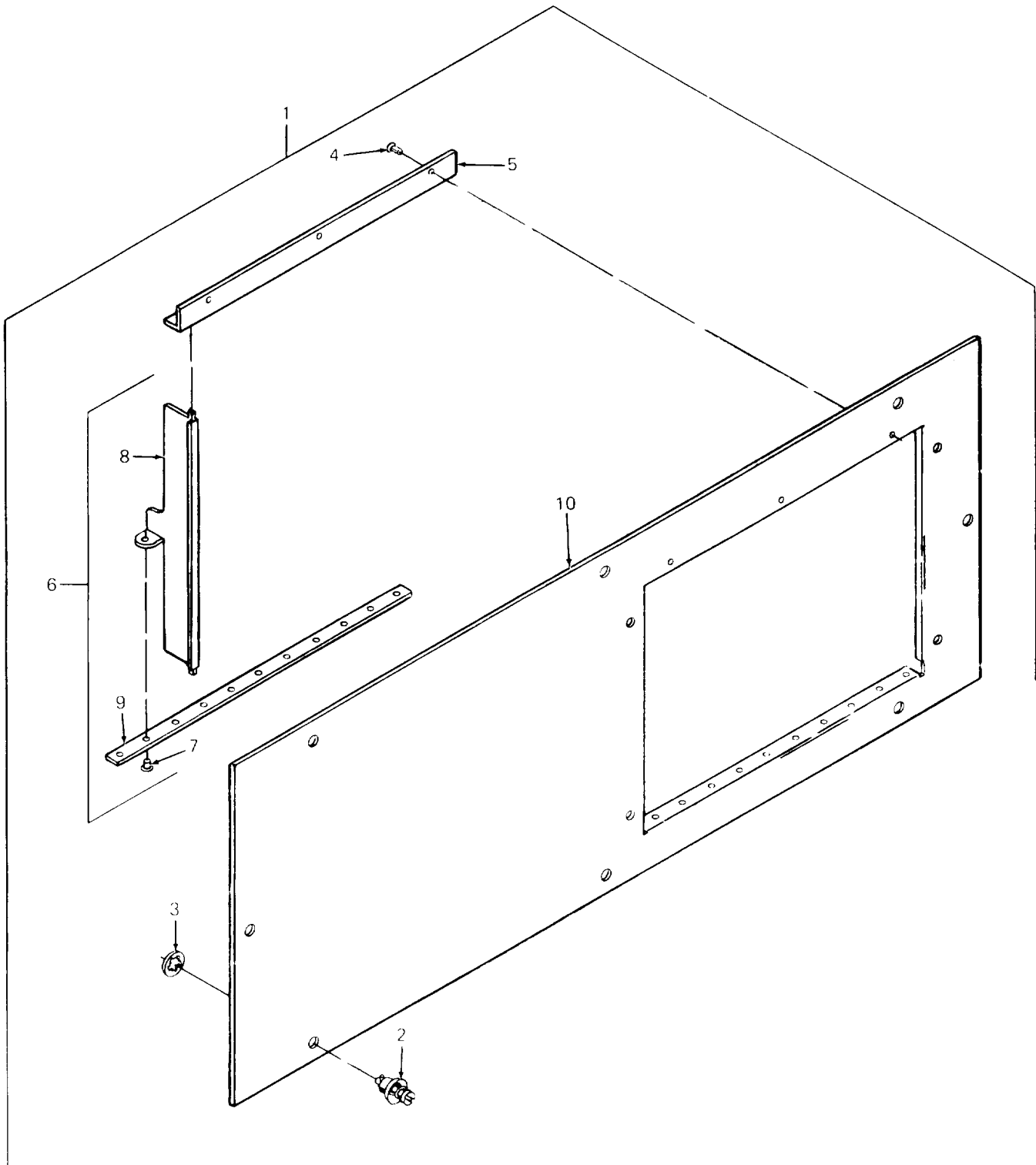


Figure 8. Left Hand Louver Panel Assembly

SECTION II					
(1)	(2)	(3)	(4)	(5)	(6)
ITEM NO	SMR CODE	FSCM	PART NUMBER	DESCRIPTION AND USABLE ON CODE (UOC)	QTY
TM5-4520-253-23P					
GROUP 02 HEATER CASE ASSEMBLY					
FIG. 8 LEFT HAND LOUVER PANEL ASSEMBLY					
1	XBOOO	92878	168232	PANEL ASSEMBLY, LEFT HAND LOUVER	1
2	PAOZZ	71286	26S8-3	STUD ASSEMBLY,TURNL	8
3	PAOZZ	71286	2600-LW	WASHER,LOCK INTERNAL TOOTH	8
4	PAOZZ	96906	MS16535-133	RIVET,TUBULAR 1/8 IN. DIA. X 5/32 IN.LG.,BRASS	3
5	XBOZZ	92878	68751	LOCK,LOUVER,LEFT HAND	1
6	XBOOO	92878	2-68746	LOUVER,SUBASSEMBLY, LEFT HAND	1
7	PAOZZ	96906	MS16535-115	RIVET,TUBULAR	10
8	XAOZZ	92878	168148	LOUVERLEFT HAND	10
9	XAOZZ	92878	68748	BAR,LOUVER CONTROL	1
10	XBOZZ	92878	168230	PANEL,LOUVER,LEFT HAND	1

END OF FIGURE

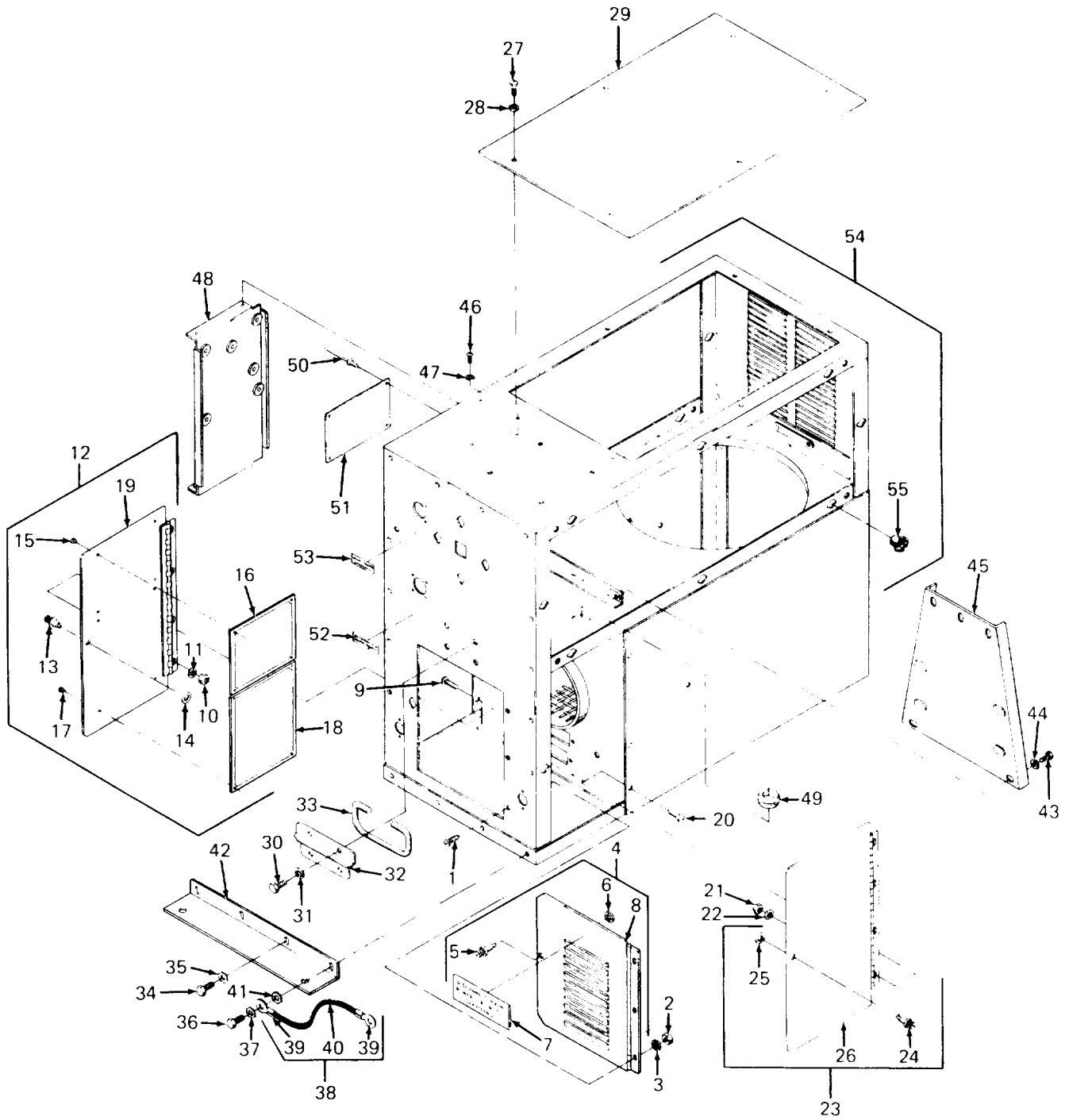


Figure 9. Heater Case Assembly

SECTION II (1)	ITEM (2)	(3)	TM5-4520-253-23P (4)	(5)	(6)
NO	SMR CODE	FSCM	PART NUMBER	DESCRIPTION AND USABLE ON CODE (UOC)	QTY
GROUP 02 HEATER CASE ASSEMBLY					
FIG. 9 HEATER CASE ASSEMBLY					
1	PAOZO	96906	MS35206-261	SCREW,MACHINE PAN HEAD	3
2	PAOZH	96906	MS35649-202	NUT,PLAIN,HEXAGON #10-24	3
3	PAOZZ	96906	MS35333-39	WASHER,LOCK INTERNAL TOOTH	3
4	XBOZZ	92878	168241	DOOR SUBASSEMBLY, FRONT ACCESS	1
5	PAOZZ	71286	26S8-3	STUD ASSEMBLY,TURNL	1
6	PAOZZ	71286	2600-LW	WASHER,LOCK INTERNAL TOOTH	1
7	XDOZZ	92878	168530	LABEL,CAUTION	1
8	XBOZZ	92878	168242	DOOR,FRONT ACCESS	1
9	PAOZO	96906	MS35206-261	SCREW,MACHINE PAN HEAD	4
10	PAOZF	96906	MS35649-202	NUT,PLAIN,HEXAGON #10-24	4
11	PAOZZ	96906	MS35333-39	WASHER,LOCK INTERNAL TOOTH	4
12	XBOZZ	92878	168255	DOOR ASSEMBLY, RIGHT	1
13	PAOZZ	71286	26S8-3	STUD ASSEMBLY,TURNL	1
14	PAOZZ	71286	2600-LW	WASHER,LOCK INTERNAL TOOTH	1
15	PAOZZ	96906	MS16535-133	RIVET,TUBULAR 1/8 DIA. X 5/32 IN.LG.,BRASS	4
16	XBOZZ	92878	168252	PLATE,INSTUCTION	1
17	PAOZZ	96906	MS16535-133	RIVET,TUBULAR 1/8 DIA. X 5/32 LG., BRASS	4
18	XBOZZ	92878	168296	PLATE,WIRING DIAGRAM	1
19	XBOZZ	92878	168253	DOOR,RIGHT SIDE	1
20	PAOZO	96906	MS35206-261	SCREW,MACHINE PAN HEAD	4
21	PAOZF	96906	MS35649-202	NUT,PLAIN,HEXAGON #10-24	4
22	PAOZZ	96906	MS35333-39	WASHER,LOCK INTERNAL TOOTH	4
23	XBOZZ	92878	2-168006	DOOR ASSEMBLY,LEFT	1
24	PAOZZ	71286	26S8-3	STUD ASSEMBLY,TURNL	1
25	PAOZZ	71286	2600-LW	WASHER,LOCK INTERNAL TOOTH	1
26	XBOZZ	92878	2-68619	DOOR,LEFT SIDE	1
27	PAOZO	96906	MS35206-261	SCREW,MACHINE PAN HEAD	6
28	PAOZZ	96906	MS35333-39	WASHER,LOCK INTERNAL TOOTH	6
29	XBOZZ	92878	68706	COVER,BOTTOM, HEATER CASE	1
30	PZOZF	96906	MS90725-3	SCREW,CAP,HEXAGON H HEXAGON HEAD	8
31	PAOZH	96906	MS35333-40	WASHER,LOCK INTERNAL TOOTH	8
32	XBOZZ	92878	58621	PLATE,HANDLE	2
33	XBOZZ	92878	58620	HANDLE,CARRYING	2
34	PAOZF	96906	MS90725-3	SCREW,CAP,HEXAGON H HEXAGON HEAD	7
35	PAOZZ	96906	MS35335-33	WASHER,LOCK EXTERNAL TOOTH	7
36	PAOZO	96906	MS90725-5	SCREW,CAP,HEXAGON H HEXAGON HEAD	1
37	PAOZZ	96906	MS35335-33	WASHER,LOCK EXTERNAL TOOTH	1
38	PAOZZ	92878	2-68828	LEAD,ELECTRIAL ASSEMBLY	1
39	PAOZZ	14726	R3458BT	TERMINAL,LUG	2
40	PAOZZ	92878	10534-01	TERMINAL STRIP.GROU 5 IN. REQUIRED	1
41	PAOZZ	96906	MS45904-68	WASHER,LOCK EXTERNA/INTERNAL TOOTH	1
42	XBOZZ	92878	168018	BRACKET,MOUNTING	2
43	PAFZF	96906	MS90725-3	SCREW,CAP,HEXAGON H HEXAGON HEAD	5
44	PAFZZ	96906	MS35335-33	WASHER,LOCL EXTERNAL TOOTH	5
45	XBFZZ	92878	2-168111	BULKHEAD ASSEMBLY	1

SECTION II				TM5-4520-253-23P	
(1)	(2)	(3)	(4)	(5)	(6)
ITEM NO	SMR CODE	FSCM	PART NUMBER	DESCRIPTION AND USABLE ON CODE (UOC)	QTY
46	PAFZO	96906	MS35206-261	SCREW,MACHINE PAN HEAD	4
47	PAFZZ	96906	MS35333-39	WASHER,LOCK INTERNAL TOOTH	4
48	XBFFZ	92878	168299	PLATE ASSEMBLY, P.C. BOARD MOUNTING	1
49	XBOZZ	70485	1418	GROMMET,NONMETALLIC	2
50	PAOZZ	20054	SB4-2	RIVET,BLIND 1/8 IN. DIA X 3237 IN. LG	4
51	XBOZZ	92878	170559	PLATE, IDENTIFICATION	1
52	PAOZZ	92878	168059	LABEL RECEPTACLE	1
53	PAOZZ	92878	68708-02	LABEL RECEPTACLE	1
54	XBFFF	92878	2-168195	HEATER CASE ASSEMBLY, UH68G	1
55	PAOZZ	71286	26R41-1-1AA	RECEPTACLE,FRONT MO	23

END OF FIGURE

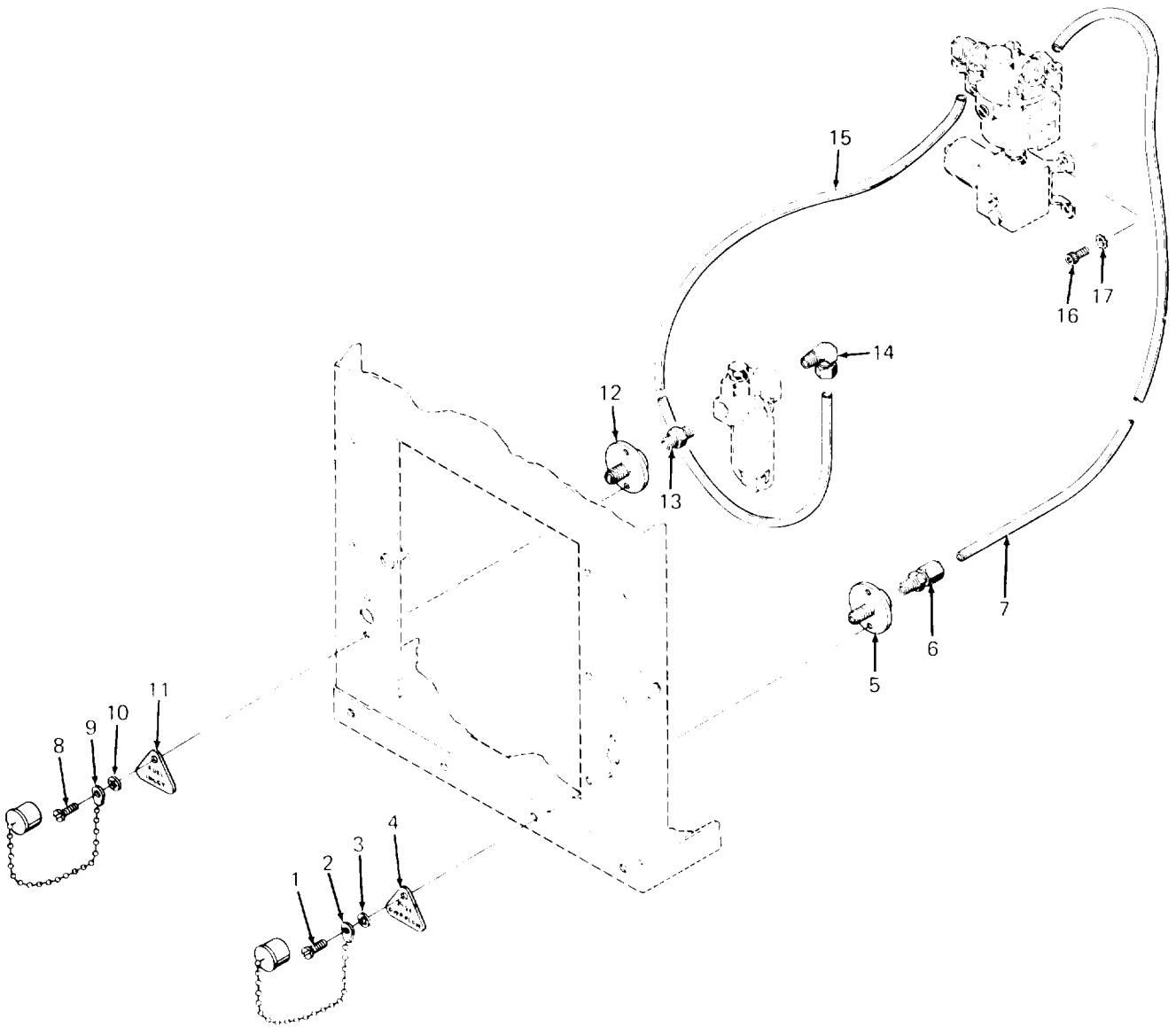


Figure 10. Carburetor and Fittings

SECTION II (1)	SMR (2)	FSCM (3)	TM5-4520-253-23P PART NUMBER (4)	DESCRIPTION AND USABLE ON CODE (UOC) (5)	QTY (6)
GROUP 03 FUEL SYSTEM					
FIG. 10 CARBURETOR AND FITTINGS					
1	PAOZF	96906	MS35206-242	SCREW,MACHINE PAN HEAD	2
2	PAOZZ	92878	168102	CAP PLUG INCLUDES 4 IN.CHAIN AND LUG	1
3	PAOZZ	96906	MS35333-38	WASHER,LOCK INTERNAL TOOTH	2
4	XBOZZ	92878	168244-02	FUEL TAG,OVERLFOV	1
5	PAOZZ	92878	68330	CONNECTOR,FUEL HEAT	1
6	PAOZZ	93061	68CA-4-2	ADAPTER,STRAIGHT,PI	1
7	PAOZ	92878	10662-03	TUBING,NONMETALLIC 11 IN.REQD., INCLUDES P/N 68CA-4-2 (93061),P/N 4-CB12-B(45681)	1
8	PAOZF	96906	MS35206-242	SCREW,MACHINE PAN HEAD	2
9	PAOZZ	92878	168102	CAP PLUG INCLUDES 4 IN.CHAIN AND LUG	1
10	PAOZZ	96906	MS35333-38	WASHER,LOCK INTERNAL TOOTH	2
11	XBOZZ	92878	168244-01	FUEL TAG,INLET	1
12	PAOZZ	92878	68330	CONNECTOR,FUEL HEAT	1
13	PAOZZ	79470	3325X2	NIPPLE,PIPE HEXAGON,1/8 I.P.T	1
14	PAOZZ	30780	4CB12B	ELBOW,PIPE TO TUBE 1/8 I.P.T. - 1/4 IN. TUBE	1
15	PAOZZ	92878	10662-03	TUBING,NONMETALLIC 11 IN.REQD., INCLUDES P/N 4CB (45681) 2 EA	1
16	XBOZZ	92878	7520	SCREW,CAP, SOCKET HEAD,#10-24 X3/8 IN. LG	4
17	PAOZZ	96906	MS35335-32	WASHER,LOCK EXTERNAL TOOTH	4

END OF FIGURE

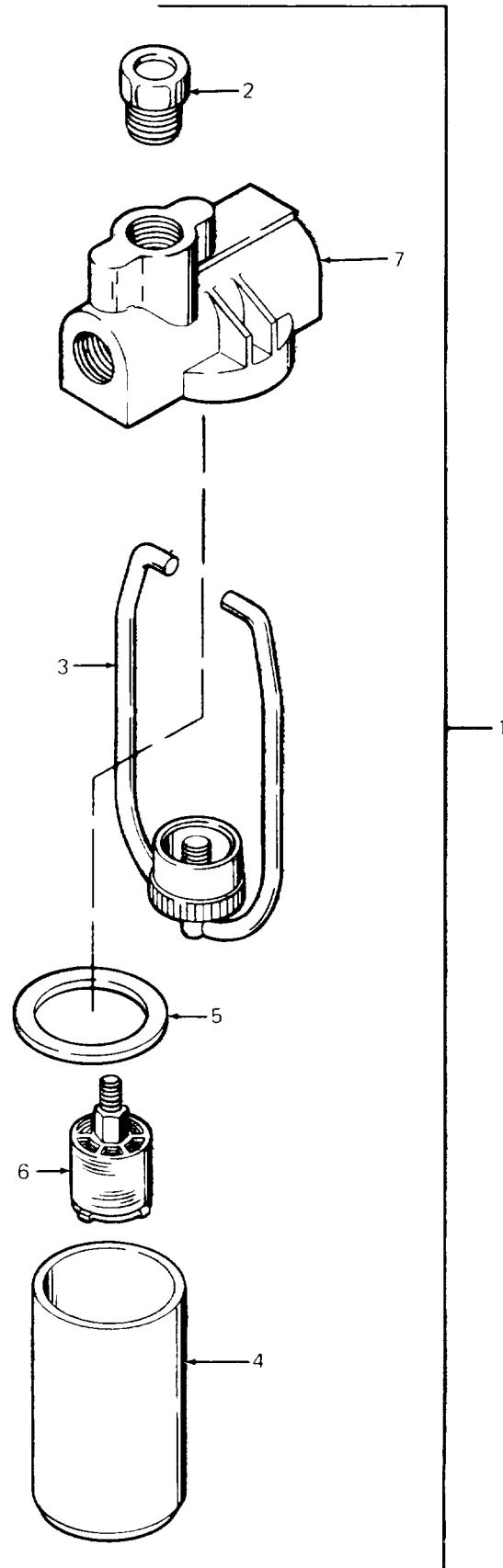


Figure 11. Fuel Filter Assembly

SECTION II					
(1)	(2)	(3)	(4)	(5)	(6)
ITEM NO	SMR CODE	FSCM	PART NUMBER	DESCRIPTION AND USABLE ON CODE (UOC)	QTY
TM5-4520-253-23P					
GROUP 03 FUEL SYSTEM					
FIG. 11 FUEL FILTER ASSEMBLY					
1	PAOZO	96906	MS51086-1	STRAINER, SIDIMENT	1
2	XBOZZ	19207	A5277290	PLUG, PIPE	1
3	XAOZZ	79960	F10X3	BAIL	1
4	XAOZZ	79960	F8X56	BOUWL, FILTER	1
5	PAOZZ	79960	FIX38	GASKET	1
6	PAOZZ	79960	F2X79T3	FILTER ELEMENT, FLUIT	1
7	XAOZZ	79960	F7X184	HEAD, FILTER	1
END OF FIGURE					

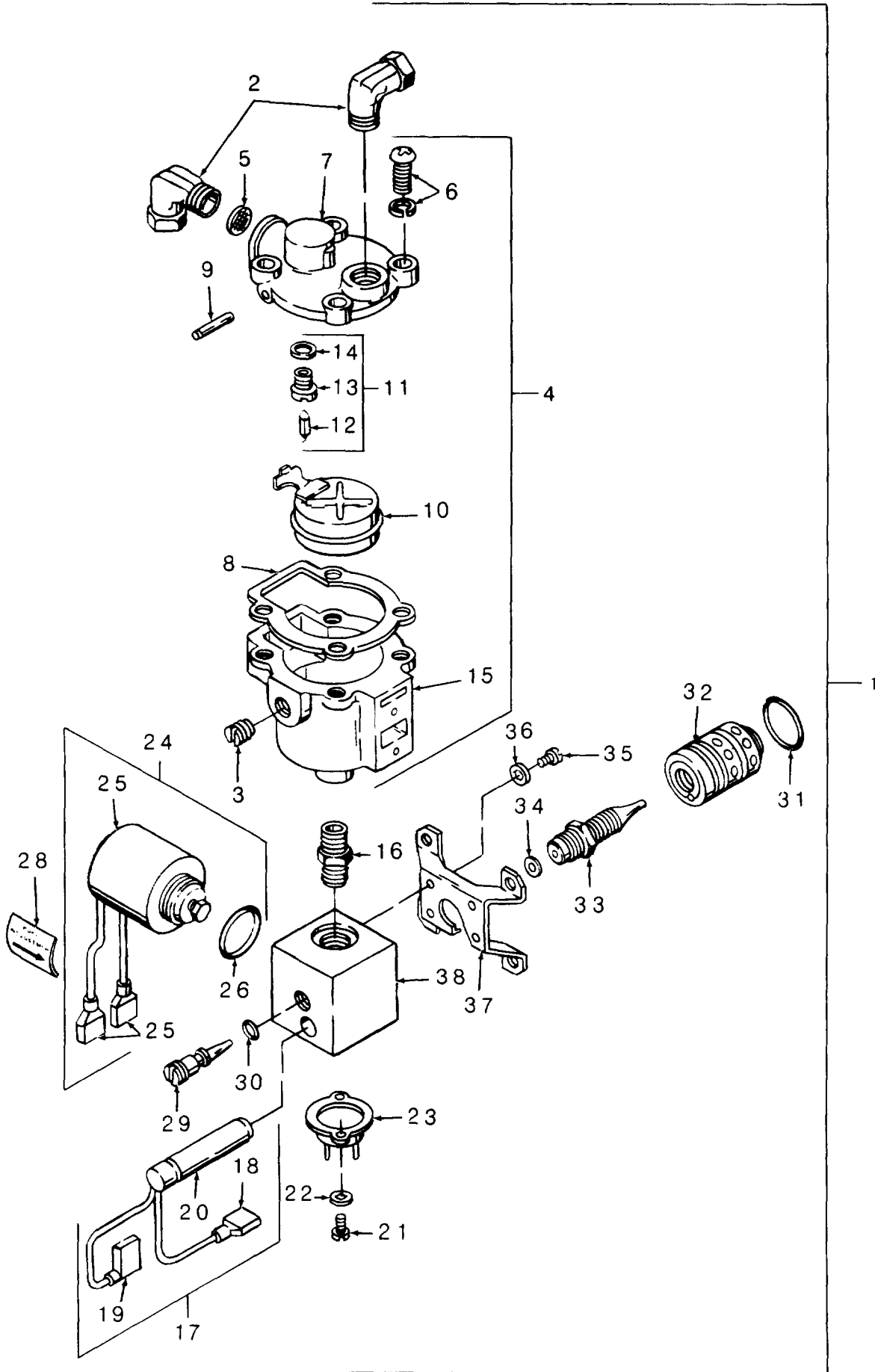


Figure 12. Carburetor Assembly

SECTION II (1) ITEM NO	(2) SMR CODE	(3) FSCM	TM5-4520-253-23P (4) PART NUMBER	(5) DESCRIPTION AND USABLE ON CODE (UOC)	(6) QTY
GROUP 03 FUEL SYSTEM					
FIG. 12 CARBURETOR ASSEMBLY					
1	PAOOO	92878	168198	CARBURETOR,HEATER	1
2	PAOZZ	30780	4CB12B	ELBOW,PIPE TO TUBE 1/8 I.P.T. - I/ 4 IN. TUBE	2
3	XDOZZ	59501	10-17966	PLUG,PIPE BRASS,1/8 I.P.T	1
4	XBOZZ	96152	013440	FLOAT,CORBURETOR	1
5	PAOZZ	96152	95-164	STRAINER ELEMENT ,SE	1
6	XBOZZ	19207	454430	SCREW, INCLUDES LOCK WASHER	4
7	XBOZZ	96152	07397	COVER	1
8	PAOZZ	96152	07398	GASKET	1
9	XBOZZ	96152	0700	PIN,STRAIGHT,HEADLE	1
10	XBOZZ	96152	013441	FLOAT	1
11	PAOZZ	96152	013443	NEEDLE ASSEMBLY,INL ASSEMBLY, INCLUDES WASHER P/N 012641 (96152)	1
12	XBOZZ	96152	012642	NEEDLE	1
13	XAOZZ	96152	012643	SEAT	1
14	XAOZZ	96152	012641	WASHER	1
15	XBOZZ	96152	09196	BODY,FLOAT BOWL	1
16	PAOZZ	79470	3325X2	NIPPLE,PIPE HEXAGON,1/8 I.P.T	1
17	PAOZZ	92878	168263	HEATER,CARBURETOR CARBURETOR	1
18	PAOZZ	14726	S05076	TERMINAL,QUICK DISC MALE,FULLY INSULATED	1
19	PAOZZ	14726	SO5363SFT	TERMINAL QUICK DISC FULLY INSULATED,FEMALE,QUICK DISCONNECT	1
20	XAOZZ	01692	SC37178	HEATER,CARTRIDGE	1
21	PAOZH	96906	MS35206-226	SCREW,MACHINE FILISTER HEAD,6/32 X 1/4 IN. LG	2
22	PAOZZ	96906	MS35333-37	WASHER,LOCK INTERNAL TOOTH	2
23	PAOZZ	92878	5357	SWITCH,THERMOSTATIC PREHEAT	1
24	PAOZZ	92878	168204	FUEL SOLENOID ELECT SUBASSEMBLY	1
25	PAOZZ	14726	S05076	TERMINAL,QUCK DISC MALE,FULLY INSULATED	2
26	XDOZZ	96906	MS9021-005	PACKING,PREFORMED	1
27	XAOZZ	20832	17C0171-3	ACTUATOR,SOLENOID, 24 VOLT	1
28	XBOZZ	92878	47907	LABEL,FUEL ADJUSTMENT	1
29	XBOZZ	92878	49189	NEELDLE,FUEL	1
30	PAOZZ	27877	568-006	PACKING,PROFORMED	1
31	PAOZZ	81349	M83248/1-018	PACKING,PREFORMED	1
32	XBOZZ	92878	2-48113-02	MIXER,FUEL	1
33	XBOZZ	92878	168679	JET,FUEL	1
33	XBOZZ	92878	49323	GASKET,JET 0.010 IN. THK. SOFT COPPER	1
35	PAOZH	96906	MS35206-226	SCREW,MACHINE FILISTER H4EAD,6/32 X 1/4 IN. LG	4
36	PAOZZ	96906	MS35333-37	WASHER,LOCK INTERNAL TOOTH	4
37	XBOZZ	92878	49032	BRACKET	1
38	XBOZZ	92878	168199	BODY,CORBURETOR	1

END OF FIGURE

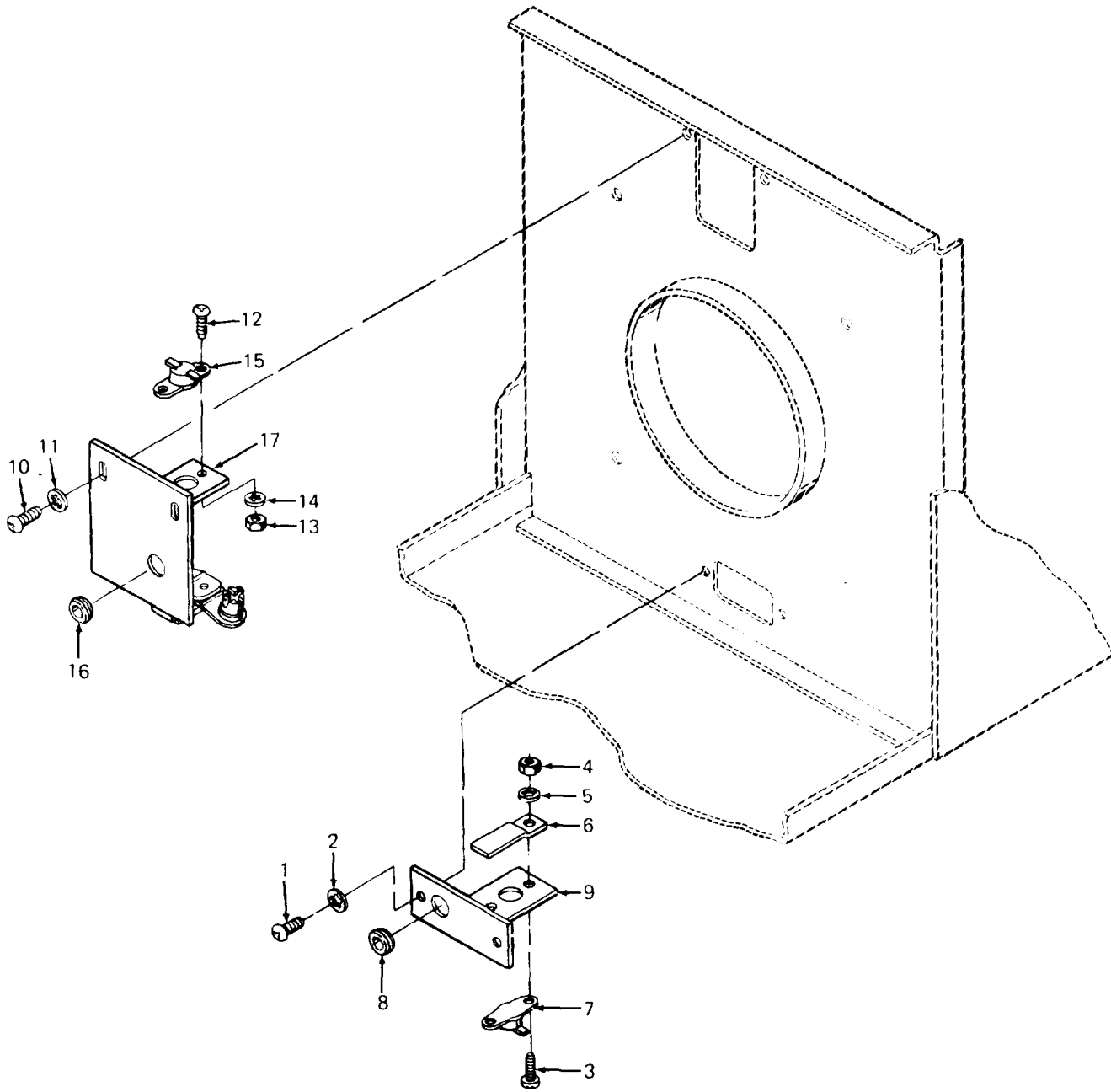


Figure 13. Thermostat and Flame Switch Assemblies

SECTION II (1)	SMR (2)	FSCM (3)	TM5-4520-253-23P (4) PART NUMBER	(5) DESCRIPTION AND USABLE ON CODE (UOC)	(6) QTY
GROUP 04 ELECTRICAL					
FIG. 13 THERMOSTAT AND FLAME SWITCH ASSEMBLIES					
1	PAPZF	96906	MS35206-242	SCREW,MACHINE PAN HEAD	2
2	PAOZZ	96906	MS35333-38	WASHER,LOCK INTERNAL TOOTH	2
3	PAOZZ	96906	MS35206-227	SCREW,MACHINE PAN HEAD	2
4	PAOZZ	96906	MS35649-262	NUT,PLAIN,HEXAGON #6-32	2
5	PAOZZ	96906	MS35333-37	WASHER,LOCK INTERNAL TOOTH	2
6	XBOZZ	92878	168686	SHIELD,THERMOSTAT	1
7	PAOZZ	81439	36T21	SWITCH, THERMOSTATIC	1
8	PAOZZ	05624	AYRZ14	GROMMET ,NONMETALLIC	1
9	XBOZZ	92878	2-168559	BRACKET , THERMOSTAT MOUNTING	1
10	PAOZF	96906	MS35206-242	SCREW,MACHINE PAN HEAD	2
11	PAOZZ	96906	MS35333-38	WASHER,LOCK INTERNAL TOOTH	2
12	PAOZZ	96906	MS35206-227	SCREW,MACHINE PAN HEAD	2
13	PAOZZ	96906	MS35649-262	NUT,PLAIN,HEXAGON #6-32	2
14	PAOZZ	96906	MS35333-37	WASHER,LOCK INTERNAL TOOTH	2
15	PAOZZ	81439	36T21	SWITCH, THERMOSTATIC	1
16	XDOZZ	12204	117957	GROMMET , NONMETALLIC	1
17	XBOZZ	92878	168289	BRACKET , THERMOSTAT MOUNTING (FLAME SWITCH)	1

END OF FIGURE

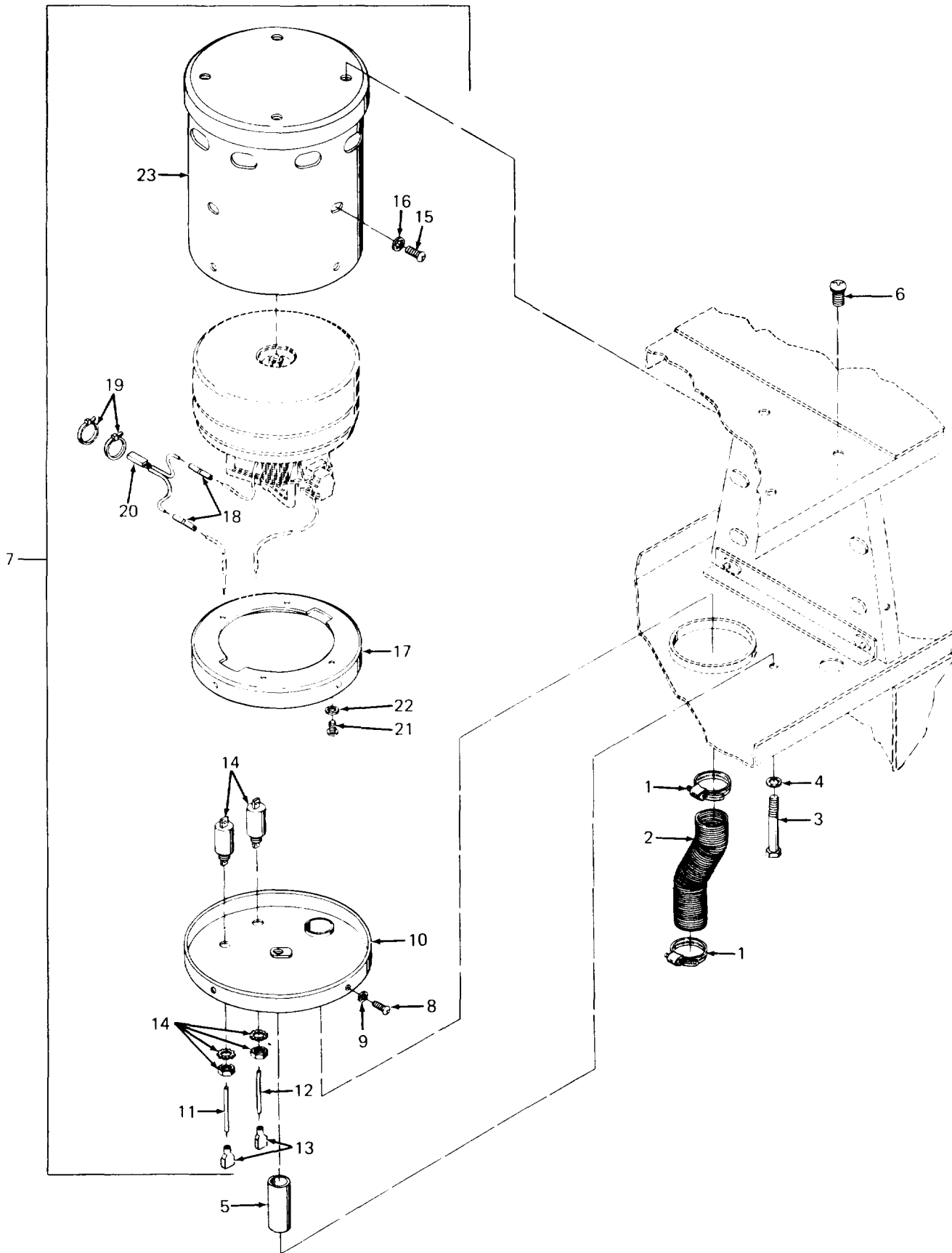


Figure 14. Combustion Blower and Housing

SECTION II (1) ITEM NO	(2) SMR CODE	(3) FSCM	TM5-4520-253-23P (4) PART NUMBER	(5) DESCRIPTION AND USABLE ON CODE (UOC)	(6) QTY
GROUP 04 ELECTRICAL					
FIG. 14 COMBUSTION BLOWER AND HOUSING					
1	PAFZZ	96906	MS35842-11	CLAMP ,HOSE	2
2	PAFZZ	92878	49351-02	HOSE , AIR DUCT	1
3	PAFZZ	96906	MS90725-18	SCREW,CAP,HEXAGON H HEXAGON HEAD	1
4	PAFZH	96906	MS35333-40	WASHER , LOCK INTERNAL TOOTH	1
5	XBFZZ	92878	168294	TUBE , SUPPORT	1
6	PAFZZ	92878	3050	SCREW, SELF-LOCKING WITH LOCK	4
7	PBFFF	92878	168161	WASHER, 1/4-20 X 3/8 IN. LG COMBUSTION BLOWER AND HOUSING ASSEMBLY	1
8	PAFZZ	96906	MS24629-23	SCREW, TAPPING, THREA ROUND HEAD, #6- 32 X 3/8 IN. LG	4
9	PAFZZ	96906	MS35333-37	WASHER, LOCK INTERNAL TOOTH	4
10	XBFZZ	92878	168162	COVER SUBASSEMBLY, BLOWER HOUSING	1
11	MFFZZ	92878	10770-23	WIRE, ELECTRICAL 16 GA., YELLOW,8 IN.LG.FROM P/N M16878/1BJE4 (81349)	1
12	MFFZZ	92878	10781-12	WIRE,ELECTRICAL, 16 GA.,WHITE,7 IN.LG.MFR.FROM P/N M16878/11BJE9 (81349)	1
13	PAFZZ	14726	SO5076	TERMINAL,QUICK DISC	2
14	PAFZZ	92878	170816	CAPACITOR,FIXED,MFT INCLUDES LOCK WASHER AND HEX NUT	2
15	PAFZZ	96906	MS35206-263	SCREW,MACHINE PAN HEAD	4
16	PAFZZ	96906	MS35333-39	WASHER, LOCK INTERNAL TOOTH	4
17	XBFZZ	92878	168192	BLOWER SUPPORT	1
18	PAFZZ	14726	B1870BNT	SPLICE ,CONDUCTOR	2
19	PAFZZ	96906	MS3367-1-9	STRAP , TIEDOWN,ELECT	2
20	PAFZZ	92878	5621	PROTECTOR, THERMAL-O THERMAL	1
21	PAFZZ	96906	MS24629-46	SCREW, TAPPING, THREA	4
22	PAFZZ	96906	MS35333-39	WASHER, LOCK INTERNAL TOOTH	4
23	XBFZZ	92878	168194	BLOWER HOUSING SUBASSEMBLY	1

END OF FIGURE

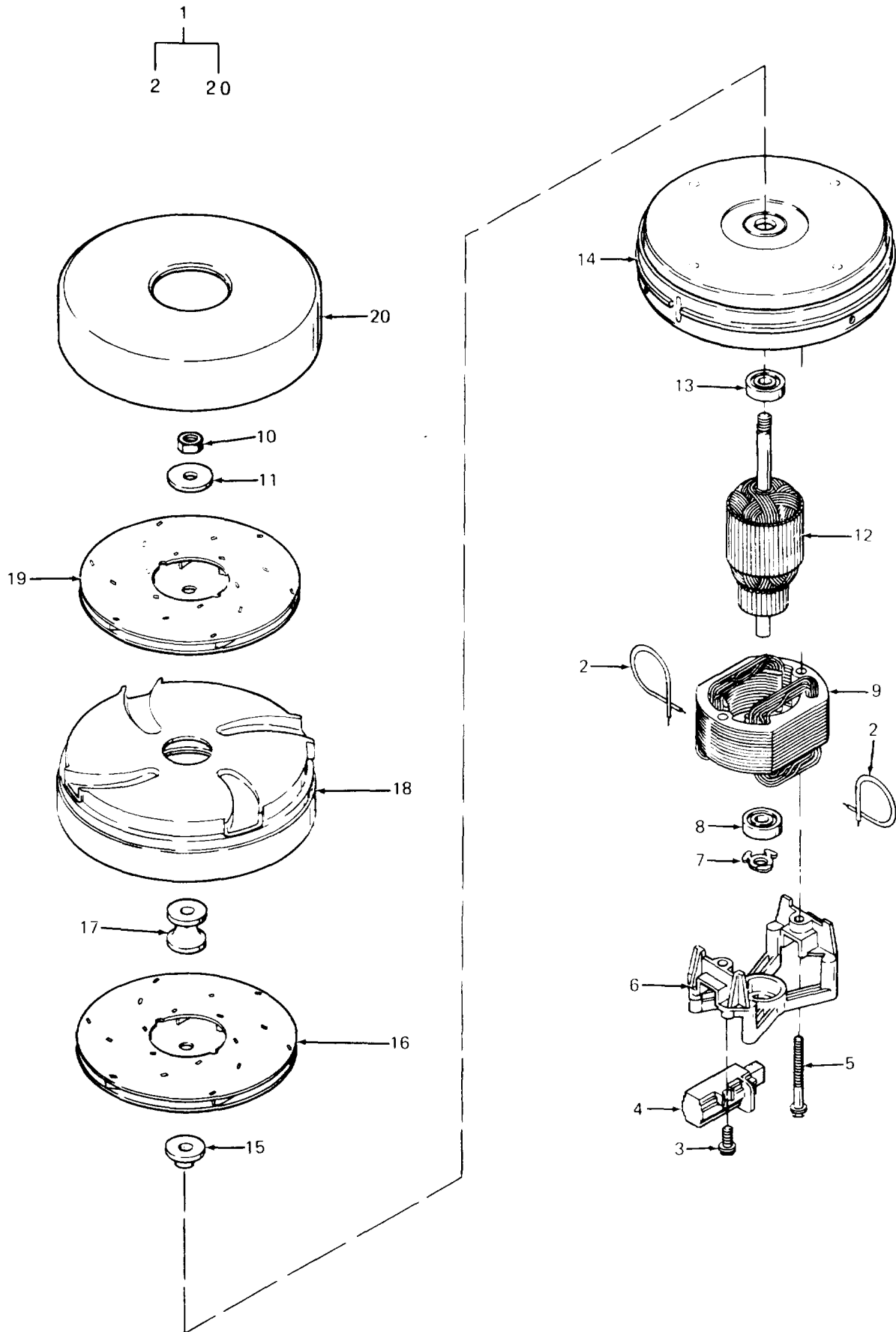


Figure 15. Blower Motor Subassembly

TM 5-4520-253-23P

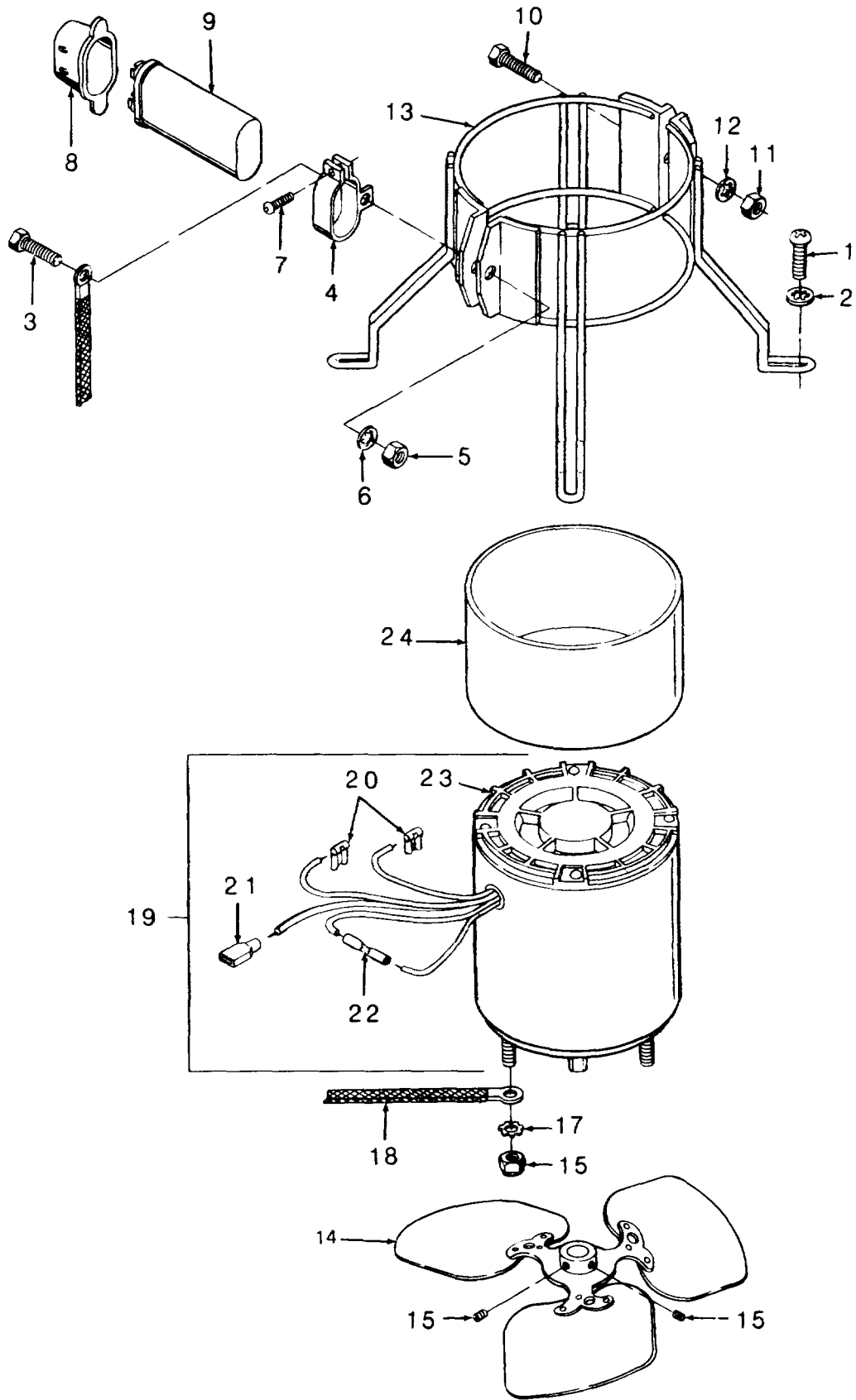


Figure 16. Ventilating Air Motor

SECTION II (1)	ITEM (2)	(3)	TM5-4520-253-23P (4)	(5)	(6)
NO	SMR CODE	FSCM	PART NUMBER	DESCRIPTION AND USABLE ON CODE (UOC)	QTY
GROUP 04 ELECTRICAL					
FIG. 16 VENTILATING AIR MOTOR					
1	PAFZZ	96906	MS35206-281	SCREW,MACHINE PAN HEAD	4
2	PAFZZ	96906	MS45904-69	WASHER,LOCK INTERNAL TOOTH	4
3	PAFZZ	53711	5979393-1	SCREW,CAP,HEXAGON H HEXAGON HEAD,1/ 4-20 X 1 IN. LG	1
4	XBFZZ	92878	168231-01	MOUNTING BRACKET, CAPACITOR	1
5	PAFZH	96906	MS51967-2	NUT,PLAIN,HEXAGON	1
6	PAFZH	96906	MS35333-40	WASHER,LOCK INTERNAL TOOTH	1
7	XBFZZ	62119	9481	SCREW,ROUND HEAD, SELF TAPPING	1
8	XBFZZ	01002	614A527P21	BOOT,CAPACITOR	1
9	PAFZZ	01002	344X192 FB	CAPACITOR,FIXED,PAP	1
10	PAFZZ	53711	5979393-1	SCREW,CAP,HEXAGON H HEXAGON HEAD,1/ 4-20 X 1 IN. LG	1
11	PAFZH	96906	MS51967-2	NUT,PLAIN,HEXAGON	1
12	PAFZH	96906	MS35333-40	WASHER,LOCK INTERNAL TOOTH	1
13	XBFZZ	92878	168213	MOUNT,MOTOR	2
14	XBFZZ	60399	N-1016-3	FAN INCLUDES SET SCREW MS51964-65 (96906)	1
15	PAFZZ	96906	MS51964-65	SCREW, CUP POINT	2
16	PAFZZ	96906	MS21044-N08	NUT,SELF-LOCK,HE #8	4
17	PAFZZ	96906	MS35335-31	WASHER,LOCK EXTERNAL TOOTH	1
18	XBFZZ	92878	2-68827-01	STRAP,GROUND	1
19	PAFZZ	92878	168287	MOTOR,ALTERNATING C AIR	1
20	PAFZZ	59730	B14-250A	TERMINAL,QUICK DISC QUICK DISCONNECT	2
21	PAFZZ	14726	SO5076	TERMINAL,QUICK DISC	1
22	XDFZZ	00779	34070	SPLICE,CONDUCTOR 22-16 AWG	1
23	XBFRZZ	62119	PHIL	MOTOR,VENTILATING, AIR	1
24	XBFZZ	92878	168288	CUSHION,MOTOR	1

END OF FIGURE

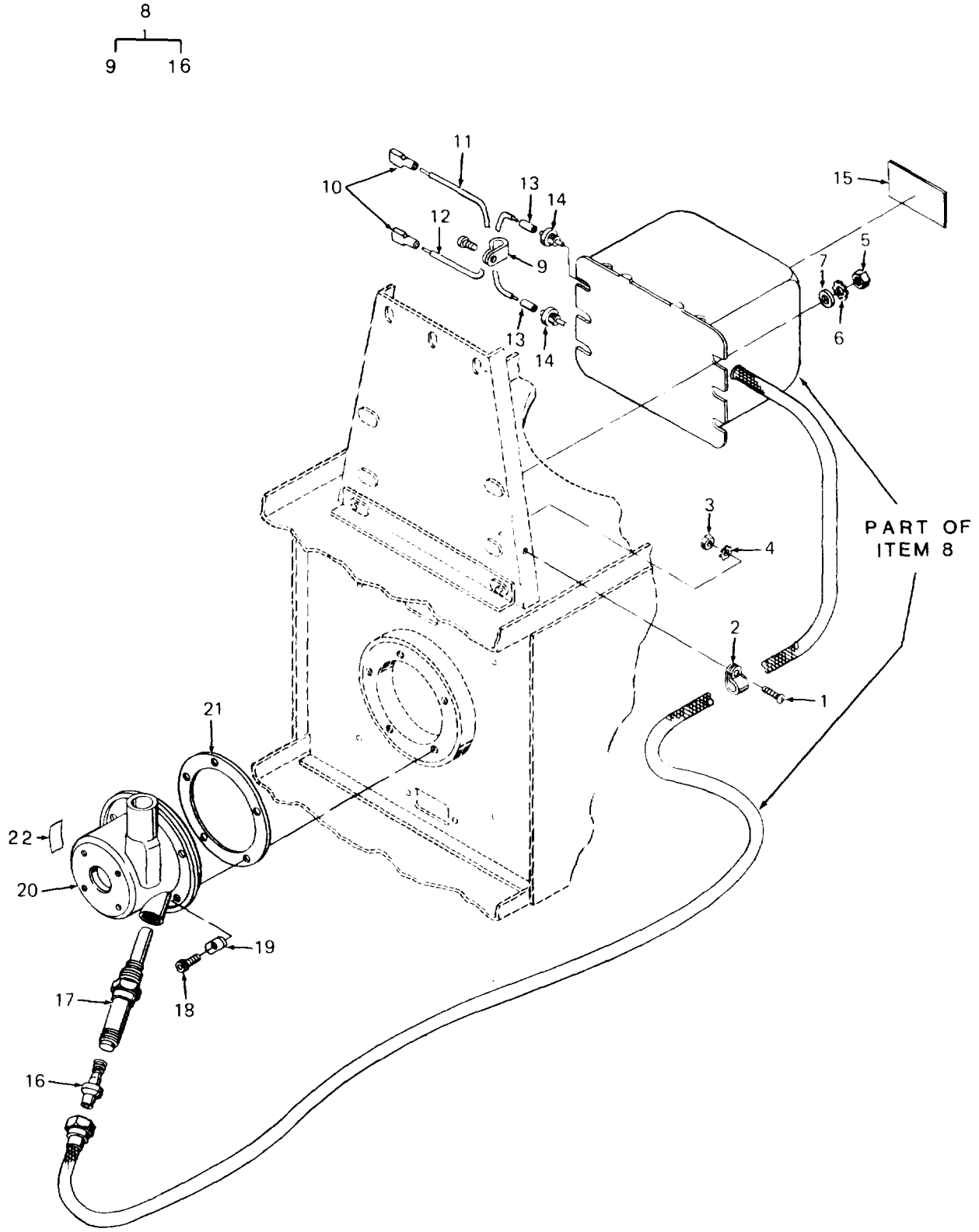


Figure 17. Burner Head and Transformer

SECTION II (1) ITEM NO	(2) SMR CODE	(3) FSCM	TM5-4520-253-23P (4) PART NUMBER	(5) DESCRIPTION AND USABLE ON CODE (UOC)	(6) QTY
GOUP 05 BURNER ASSEMBLY					
FIG. 17 BURNER HEAD AND TRANSFORMER					
1	PAOZZ	92878	2066	SCREW,MACHINE SLOTTED BINDER HEAD, #6-32 X9/16 IN. LG	1
2	PAOZZ	78553	C4886-S-5-24D	CLAMP,LOOP	1
3	PAOZZ	96906	MS35649-262	NUT,PLAIN,HEXAGON #6-32	1
4	PAOZZ	96906	MS35335-30	WASHER,LOCK EXTERNAL TOOTH,#6	1
5	PAOZZ	96906	MS51967-2	NUT,PLAIN,HEXAGON	4
6	PAOZZ	96906	MS35335-33	WASHER,LOCK EXTERNAL TOOTH	4
7	PAOZF	96906	MS27183-10	WASHER,FLAT	4
8	PAOZZ	92878	168202	TRANSFORMER,POWER,C ASSEMBLY INCLUDES HIGH VOLTAGE CABLE AND CONNECTOR	1
9	PAOZZ	78553	C-4980-A-4-35	CLAMP,LOOP	1
10	PAOZZ	14726	SO5076	TERMINAL,QUICK DISC	2
11	MOOZZ	92878	10781-37	WIRE,ELECTRICAL 16 GA.,WHITE,6 IN.LG.MFR.FROM P/ M16878/1BJE9 (81349)	1
12	MOOZZ	92878	10770-01	WIRE,ELECTRRICAL 16 GA.,YELLOW,6 IN.LG.MFR.FROM P/N M16878/1BJE4 (81349)	1
13	XBOZZ	91878	10725-02	SLEEVING	2
14	XBOZZ	33095	51-717-007 8503	FILTER,EMI	2
15	XBOZZ	92878	168315	LABEL	1
16	PAOZZ	92878	168706	CONNECTOR	1
17	PAOZZ	92878	2-168681	IGNITER, SPARK, FUEL	1
18	XDFZZ	92878	7521	SCREW SOCKET HEAD,#10-24 X1/2 IN. LG.,EVERLUBE FINISH	5
19	XBFFZ	92878	168680	PAD,PRESSURE	5
20	PBFZZ	928778	2-168627	BURNER HEAD UNIT ASSEMBLY	1
21	PBFZZ	92878	49093	GASKET	1
22	XBOZZ	92878	168685	DECAL,IGNITER	1

END OF FIGURE

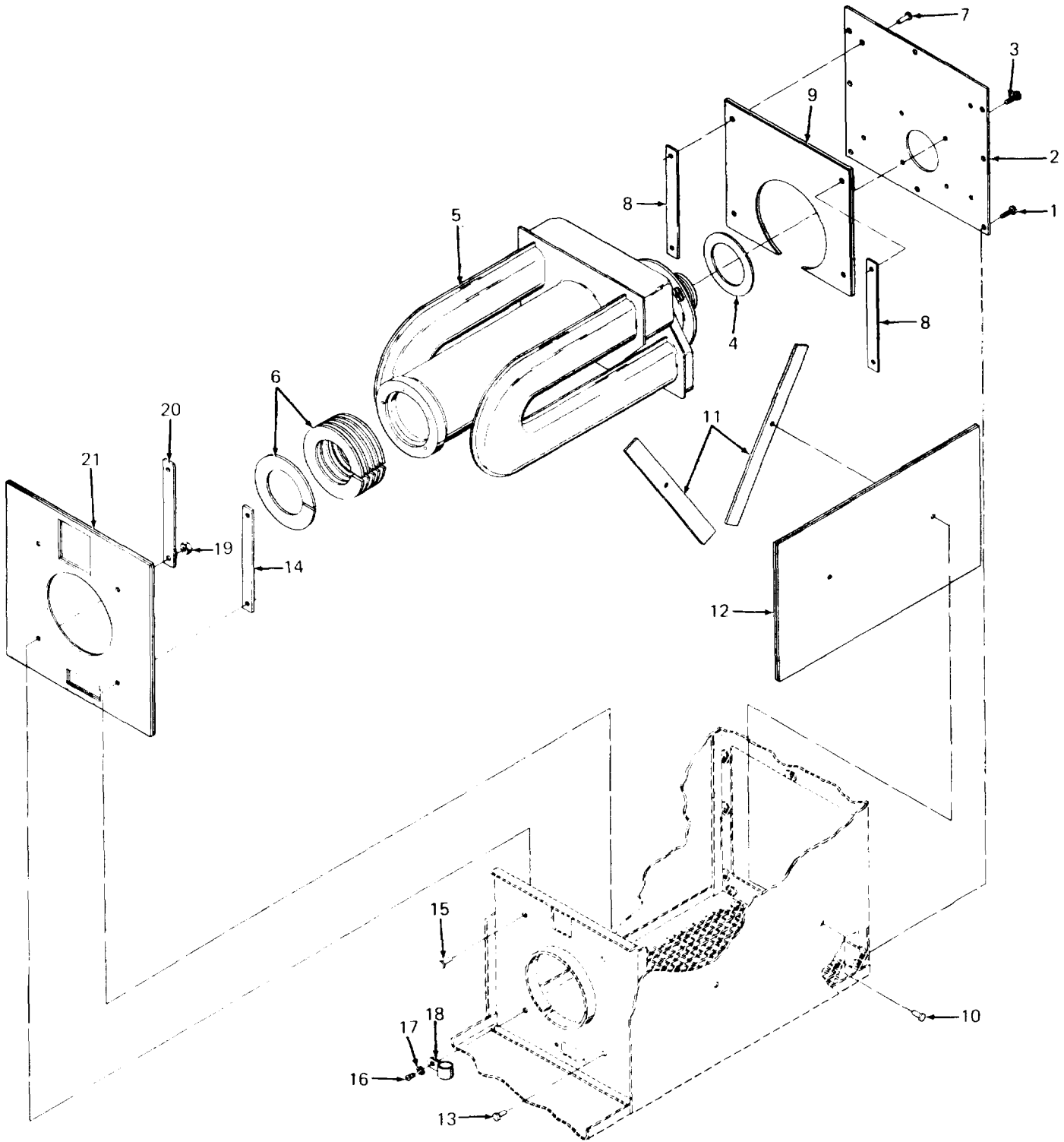


Figure 18. Heat Exchanger and Shields

SECTION II (1)	ITEM (2)	(3)	TM5-4520-253-23P (4)	(5)	(6)
NO	SMR CODE	FSCM	PART NUMBER	DESCRIPTION AND USABLE ON CODE (UOC)	QTY
GROUP 06 HEAT EXCHANGER					
FIG. 18 HEAT EXCHANGER AND SHIELDS					
1	PAFZZ	92878	3050	SCREW,SELF-LOCKING WITH LOCK WASHER	8
2	XBFZZ	92878	168025	EXCHANGER COVER, REAR	1
3	PAFZZ	92878	3050	SCREW,SELF-LOCKING WITH LOCK WASHER	4
4	PAFZZ	92878	68072	GASKET	1
5	PBZO	92878	2-168676	EXCHANGER,HEATER ASSEMBLY	1
6	XBFZZ	92878	168126	INSULATOR,HEAT EXCHANGER	6
7	PAFZZ	96906	MS20600-AD6W4	RIVET,BLIND STRUCTURAL PULL STEM	4
8	XBFZZ	92878	168248	STRAP,SUPPORT	2
9	XBFZZ	92878	168053	FELT,MECHANICAL,PRE	1
10	PAFZZ	96906	MS20600-AD6W4	RIVET,BLIND	4
11	XBFZZ	92878	168247	RETAINER,SHIELD	4
12	XBFZZ	92878	168052	SHIELD,HEATER CASE	2
13	PAFZZ	96906	MS20600-AD6W4	RIVET,BLIND STRUCTURAL PULL STEM	4
14	XBFZZ	92878	168248	STRAP,SUPPORT	2
15	PAFZZ	96906	MS20600-AD6W4	RIVET,BLIND STRUCTURAL PULL STEM	1
16	PAOZZ	96906	MS35206-263	SCREW,MACHINE PAN HEAD	1
17	PAOZZ	96906	MS35335-32	WASHER,LOCK EXTERNAL TOOTH	1
18	PAOZH	96906	MS21333-100	CLAMP,LOOP	1
19	PAOZZ	96906	MS35649-262	NUT,PLAIN,HEXAGON #6-32	1
20	XBFZZ	92878	168248	STRAP,SUPPORT	1
21	XBFZZ	92878	168229	INSULATION,SHIELD	1

END OF FIGURE

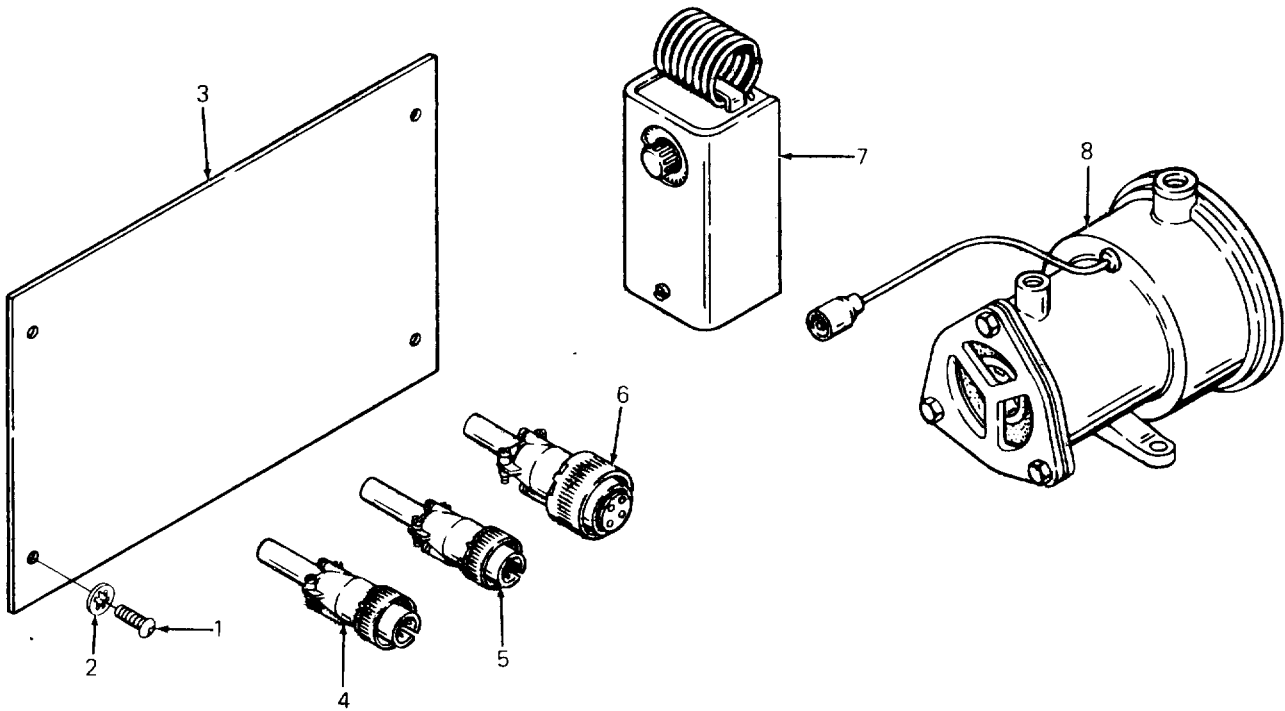


Figure 19. Accessories

SECTION II					
(1)	(2)	(3)	(4)	(5)	(6)
ITEM NO	SMR CODE	FSCM	PART NUMBER	DESCRIPTION AND USABLE ON CODE (UOC)	QTY
				TM5-4520-253-23P	
GROUP 07 ACCESSORY ITEMS					
FIG. 19 ACCESSORIES					
1	PAOZO	96906	MS35206-261	SCREW,MACHINE PAN HEAD	8
2	PAOZZ	96906	MS35333-39	WASHER,LOCK INTERNAL TOOTH	8
3	ZBOZZ	92878	68635-07	COVER,SIDE, HEATER CASE	2
4	PAOZZ	96906	MS3456W14S7P	CONNECTOR,PLUG,ELEC ROOM THERMOSTAT	1
5	PAOZZ	96906	MS3106F14S-9P	CONNECTOR,PLUG,ELEC FUEL PUMP	1
6	XDOZZ	96906	MS3456W18-10S	CONNECTOR,PLUG, ELEC	1
7	XDOZZ	92578	A19BAE-1	SWITCH, THERMOSTATIC	1
8	PAOZF	96906	MS51321-1	PUMP,FUEL,ELECTICA	1
END OF FIGURE					

SECTION II		TM5-4520-253-23P			
(1)	(2)	(3)	(4)	(5)	(6)
ITEM NO	SMR CODE	FSCM	PART NUMBER	DESCRIPTION AND USABLE ON CODE (UOC)	QTY
GROUP 08 BULK					
1	PAOZZ	99974	MM3412	WIRE,ELECTRICAL	V
2	PAOZZ	99974	MM3412	WIRE,ELECTRICAL	V
3	XDOZZ	81349	M16878/1BGE8	WIRE,ELECTRICAL	V
4	PAOZZ	81349	M16878/1BJE4	WIRE,ELECTRICAL	V
5	PAOZZ	81349	M16878/1BGE4	WIRE,ELECTRICAL	V
6	XDOZZ	81349	M16878/1BJE1	WIRE,ELECTRICAL	V
7	XDOZZ	81349	M16878/1BJE1	WIRE,ELECTRICAL	V
8	PAOZZ	81349	M16878/1BJE0	WIRE,ELECTRICAL	V
9	PAOZZ	81349	M16878/1BGE9	WIRE,ELECTRICAL	V
10	PAOZZ	81349	M16878/1BGE3	WIRE,ELECTRICAL	V
11	XDOZZ	81349	M16878/1BJE2	WIRE,ELECTRICAL	V
12	XDOZZ	81349	M16878/1BGE8	WIRE,ELECTRICAL	V
13	PAOZZ	81349	M16878/1BGE3	WIRE,ELECTRICAL	V
14	XDOZZ	81349	M16878/1BJE3	WIRE,ELECTRICAL	V
15	PAOZZ	81349	M16878/1BGE5	WIRE,ELECTRICAL	V
16	PAOZZ	81349	M16878/1BGE5	WIRE,ELECTRICAL	V
17	PAFZZ	81349	M16878/1BJE4	WIRE,ELECTRICAL	V
18	PAFZZ	81349	M16878/1BJE9	WIRE,ELECTRICAL	V
19	PAFZZ	81349	M16878/4BJE0	WIRE,ELECTRICAL	V
20	PAOZZ	81349	M16878/1BJE9	WIRE,ELECTRICAL	V
21	PAOZZ	81349	M16878/1BJE4	WIRE,ELECTRICAL	V
22	PAOZZ	81349	M16878/1BGE7	WIRE,ELECTRICAL	V

END OF FIGURE

BULK-1

TM 5-4520-253-23P

SECTION III

Not Applicable

CROSS-REFERENCE INDEXES

NATIONAL STOCK NUMBER INDEX

STOCK NUMBER	FIG.	ITEM	STOCK NUMBER	FIG.	ITEM
5315-00-005-0442	6	5	5940-00-481-9089	16	20
5320-00-060-5385	7	4	4520-00-534-6826	12	5
	8	4	6145-00-542-6573	BULK	4
	9	15		BULK	17
	9	17		BULK	21
5310-00-067-6357	16	2	5310-00-550-1130	9	31
5305-00-068-0500	9	30		14	4
	9	34		16	6
	9	43		16	12
5305-00-068-0501	9	36	5310-00-559-0070	10	3
5305-00-068-0502	6	9		10	10
5305-00-071-2233	14	3		13	2
5975-00-074-2072	2	2		13	11
	3	2	5310-00-576-5752	9	3
	5	3		9	11
	14	19		9	22
5310-00-088-1251	6	11		9	28
5340-00-103-2900	17	2		9	47
6105-00-104-4341	14	20		14	16
5330-00-110-8745	18	4		14	22
5940-00-143-4780	5	16		19	2
	5	19	5310-00-579-0079	1	10
5330-00-166-0994	12	31		1	12
5975-00-201-8826	4	15		12	22
5940-00-204-8966	2	6		12	36
	2	9		13	5
	3	6		13	14
	5	33		14	9
5310-00-209-0786	9	35	5320-00-582-3276	18	7
	9	37		18	10
	9	44		18	13
	17	6		18	15
5310-00-209-0788	4	4	5310-00-596-7691	10	17
	4	21		18	17
	17	4	5310-00-596-7693	16	17
5325-00-276-4993	13	8	5930-00-615-9376	4	6
4730-00-278-3721	10	13	5310-00-616-3554	1	4
	12	16		1	8
5330-00-321-0982	12	8		4	25
5310-00-337-8329	4	10	4730-00-618-2952	10	6
	4	32	5935-00-626-3102	19	4
	7	3	6145-00-643-0650	BULK	18
	8	3		BULK	20
	9	6	6145-00-652-1441	BULK	9
	9	14	2910-00-652-4446	11	6
	9	25	6145-00-652-9307	BULK	5
6145-00-347-1171	BULK	19	5925-00-682-4015	4	17
6150-00-351-3424	9	38	2910-00-710-6054	19	8
5940-00-481-9089	2	14	5305-00-724-5812	16	15
	3	12	5325-00-726-6699	4	9

CROSS-REFERENCE INDEXES

NATIONAL STOCK NUMBER INDEX

STOCK NUMBER	FIG.	ITEM	STOCK NUMBER	FIG.	ITEM
5325-00-726-6699	7	2	5320-00-948-7332	4	12
	8	2		7	7
	9	5		8	7
	9	13	5320-00-956-5737	4	29
	9	24	4520-00-962-1048	12	11
5310-00-761-6882	16	5	5310-00-983-8483	6	2
	16	11	5305-00-984-4983	12	21
	17	5		12	35
4730-00-764-7353	10	5	5305-00-984-4984	1	9
	10	12		13	3
5340-00-809-1492	18	18		13	12
5310-00-809-4058	17	7	5305-00-984-4988	4	2
5310-00-811-3494	16	16	5305-00-984-6208	9	1
6145-00-822-1425	BULK	1		9	9
	BULK	2		9	20
5935-00-831-8733	3	5		9	27
5305-00-855-0957	14	21		9	46
5305-00-855-0972	14	8		19	1
5360-00-888-3289	6	7	5305-00-984-6210	14	15
5330-00-888-4991	11	5		18	16
5310-00-889-2528	9	41	5305-00-988-1725	16	1
5310-00-889-2708	4	23	5305-00-993-0190	4	26
5305-00-889-2997	1	1	5320-01-004-0238	9	50
	1	5	5935-01-014-3302	19	5
5305-00-889-3000	4	22	5305-01-085-3224	17	1
5305-00-889-3001	1	11	5930-01-085-3357	13	7
5305-00-889-3002	10	1		13	15
	10	8	5360-01-085-3509	6	3
	13	1	5935-01-085-4554	3	8
	13	10	4720-01-085-4988	14	2
2910-00-905-9792	22	1	5910-01-085-6434	14	14
4730-00-908-3194	14	1	4530-01-085-9215	17	20
5930-00-909-8586	12	23	5315-01-086-0602	6	1
5940-00-926-0085	2	13	5330-01-087-8827	12	30
	3	11	5330-01-087-8831	17	21
	5	6	4520-01-087-9511	17	17
	5	8	4710-01-088-7508	10	7
	5	12		10	15
5310-00-934-9739	1	3	6210-01-089-9866	4	7
	1	7	6210-01-093-3202	4	8
	4	24	5940-01-139-0853	12	18
5310-00-934-9747	4	3		12	25
	4	20		14	13
	13	4		16	21
	13	13		17	10
	17	3	5935-01-175-8419	1	2
	18	19	5935-01-181-6651	1	6
5310-00-934-9758	9	2	2910-01-206-8630	17	16
	9	10	4520-01-238-3801	14	7
	9	21	7690-01-241-7476	9	52

CROSS-REFERENCE INDEXES

NATIONAL STOCK NUMBER INDEX

STOCK NUMBER	FIG.	ITEM	STOCK NUMBER	FIG.	ITEM
7690-01-241-7477	9	53			
4520-01-242-1644	9	55			
4520-01-242-1645	10	2			
	10	9			
4520-01-242-1646	12	1			
4520-01-242-1647	12	17			
4520-01-242-1648	12	24			
5910-01-242-1658	16	9			
7690-01-242-1680	4	33			
7690-01-242-1681	4	34			
7690-01-242-1682	4	35			
5940-01-242-1706	9	40			
4520-01-242-7256	4	18			
5305-01-256-8504	16	3			
	16	10			
5935-01-305-2938	2	5			
5935-01-306-2380	23	8			
5305-01-306-9863	14	6			
	18	1			
	18	3			

CROSS-REFERENCE INDEXES

FSCM	PART NUMBER	PART NUMBER INDEX STOCK NUMBER	FIG.	ITEM
05624	AYRZ14	5325-00-276-4993	13	8
92578	A19BAE-1		19	7
19207	A5277290		11	2
59730	B14-250A	5940-00-481-9089	2	14
			3	12
			16	20
14726	B1870BNT		14	18
78553	C-4980-A-4-35		5	2
			17	9
78553	C4886-S-5-24D	5340-00-103-2900	17	2
62119	FHIL		16	23
79960	FIX38	5330-00-888-4991	11	5
79960	F10X3		11	3
79960	F2X79T3	2910-00-652-4446	11	6
79960	F7X184		11	7
79960	F8X56		11	4
99974	MM3412	6145-00-822-1425	BULK	1
			BULK	2
96906	MS16535-115	5320-00-948-7332	4	12
			7	7
			8	7
96906	MS16535-133	5320-00-060-5385	7	4
			8	4
			9	15
			9	17
96906	MS16535-54	5320-00-956-5737	4	29
96906	MS20600-AD6W4	5320-00-582-3276	18	7
			18	10
			18	13
			18	15
96906	MS21044-N08	5310-00-811-3494	16	16
96906	MS21333-100	5340-00-809-1492	18	18
96906	MS24629-23	5305-00-855-0972	14	8
96906	MS24629-46	5305-00-855-0957	14	21
96906	MS24665-285	5315-00-005-0442	6	5
96906	MS25036-102	5940-00-204-8966	2	6
			2	9
			3	6
			5	33
96906	MS25036-108	5940-00-143-4780	5	16
			5	19
96906	MS25043-14DA	5935-01-181-6651	1	6
96906	MS25043-18DA	5935-01-175-8419	1	2
96906	MS25244-20	5925-00-682-4015	4	17
96906	MS27183-10	5310-00-809-4058	17	7
96906	MS27183-5	5310-00-983-8483	6	2
96906	MS3100R-14S-7S		5	29
96906	MS3100R-14S-9S	5935-00-831-8733	3	5
96906	MS3103-14S-9S	5935-01-305-2938	2	5
96906	MS3103-14S7S		5	28
96906	MS3103-18-10P	5935-01-306-2380	2	8

CROSS-REFERENCE INDEXES

FSCM	PART NUMBER	PART NUMBER INDEX STOCK NUMBER	FIG.	ITEM
96906	MS3106F14S-9P	5935-01-014-3302	19	5
96906	MS3367-1-9	5975-00-074-2072	2	2
			3	2
			5	3
			14	19
96906	MS3450W18-10P	5935-01-085-4554	3	8
96906	MS3456W14S7P	5935-00-626-3102	19	4
96906	MS3456W18-10S		19	6
96906	MS35059-21	5930-00-615-9376	4	6
96906	MS35206-214	5305-00-993-0190	4	26
96906	MS35206-215	5305-00-889-2997	1	1
			1	5
96906	MS35206-226	5305-00-984-4983	12	21
			12	35
96906	MS35206-227	5305-00-984-4984	1	9
			13	3
			13	12
96906	MS35206-228	5305-00-984-4988	4	2
96906	MS35206-230	5305-00-889-3000	4	22
96906	MS35206-231	5305-00-889-3001	1	11
96906	MS35206-242	5305-00-889-3002	10	1
			10	8
			13	1
			13	10
96906	MS35206-261	5305-00-984-6208	9	1
			9	9
			9	20
			9	27
			9	46
			19	1
96906	MS35206-263	5305-00-984-6210	14	15
			18	16
96906	MS35206-281	5305-00-988-1725	16	1
96906	MS35333-37	5310-00-579-0079	1	10
			1	12
			12	22
			12	36
			13	5
			13	14
			14	9
96906	MS35333-38	5310-00-559-0070	10	3
			10	10
			13	2
			13	11
96906	MS35333-39	5310-00-576-5752	9	3
			9	11
			9	22
			9	28
			9	47
			14	16
			14	22

CROSS-REFERENCE INDEXES

FSCM	PART NUMBER	PART NUMBER INDEX STOCK NUMBER	FIG.	ITEM
96906	MS35333-39	5310-00-576-5752	19	2
96906	MS35333-40	5310-00-550-1130	9	31
			14	4
			16	6
			16	12
96906	MS35335-29	5310-00-616-3554	1	4
			1	8
			4	25
96906	MS35335-30	5310-00-209-0788	4	4
			4	21
			17	4
96906	MS35335-31	5310-00-596-7693	16	17
96906	MS35335-32	5310-00-596-7691	10	17
			18	17
96906	MS35335-33	5310-00-209-0786	9	35
			9	37
			9	44
			17	6
96906	MS35649-202	5310-00-934-9758	9	2
			9	10
			9	21
96906	MS35649-242	5310-00-934-9739	1	3
			1	7
			4	24
96906	MS35649-262	5310-00-934-9747	4	3
			4	20
			13	4
			13	13
			17	3
			18	19
96906	MS35842-11	4730-00-908-3194	14	1
96906	MS45904-54	5310-00-889-2708	4	23
96906	MS45904-68	5310-00-889-2528	9	41
96906	MS45904-69	5310-00-067-6357	16	2
96906	MS51086-1	2910-00-905-9792	11	1
96906	MS51321-1	2910-00-710-6054	19	8
96906	MS51922-1	5310-00-088-1251	6	11
96906	MS51964-65	5305-00-724-5812	16	15
96906	MS51967-2	5310-00-761-6882	16	5
			16	11
			17	5
96906	MS9021-005		12	26
96906	MS90725-18	5305-00-071-2233	14	3
96906	MS90725-3	5305-00-068-0500	9	30
			9	34
			9	43
96906	MS90725-5	5305-00-068-0501	9	36
96906	MS90725-6	5305-00-068-0502	6	9
81349	M16878/1BGE3		BULK	10
			BULK	13
81349	M16878/1BGE4	6145-00-652-9307	BULK	5

CROSS-REFERENCE INDEXES

FSCM	PART NUMBER	PART NUMBER INDEX STOCK NUMBER	FIG.	ITEM
81349	M16878/1BGE5		BULK	15
			BULK	16
81349	M16878/1BGE7		BULK	22
81349	M16878/1BGE8		BULK	3
			BULK	12
81349	M16878/1BGE9	6145-00-652-1441	BULK	9
81349	M16878/1BJE0		BULK	8
81349	M16878/1BJE1		BULK	6
			BULK	7
81349	M16878/1BJE2		BULK	11
81349	M16878/1B4E3		BULK	14
81349	M16878/1BJE4	6145-00-542-6573	BULK	4
			BULK	17
			BULK	21
81349	M16878/1BJE9	6145-00-643-0650	BULK	18
			BULK	20
81349	M16878/4BJE0	6145-00-347-1171	BULK	19
92878	M4080		15	15
92878	M4081		15	16
			15	19
92878	M4084		15	10
92878	M4085		15	17
92878	M4091-1		15	18
92878	M4092		15	17
92878	M4094		15	7
92878	M4095		15	20
92878	M4349-3		15	9
92878	M4386-4		15	5
92878	M4402		15	3
92878	M4406-1		15	4
92878	M4417-1		15	14
92878	M4418		15	6
92878	M4423-4		15	12
81349	M83248/1-018	5330-00-166-0994	12	31
06402	N 1 480 08	4520-01-242-7256	4	18
60399	N-1016-3		16	14
14726	R3458BT		9	39
10054	SB4-2	5320-01-004-0238	9	50
01692	SC37178		12	20
14726	SO5075		2	11
			3	9
14726	SO5076	5940-01-139-0853	12	18
			12	25
			14	13
			16	21
			17	10
14726	SO5363SFT		2	12
			3	10
			12	19
14726	SO9718SF	5940-00-926-0085	2	13
			3	11

CROSS-REFERENCE INDEXES

FSCM	PART NUMBER	PART NUMBER INDEX STOCK NUMBER	FIG.	ITEM
14726	S09718SF	5940-00-926-0085	5	6
			5	8
			5	12
96152	012641		12	14
96152	012642		12	12
96152	012643		12	13
96152	013440		12	4
96152	013441		12	10
96152	013443	4520-00-962-1048	12	11
27264	03-09-2092		3	14
			5	4
96152	0700		12	9
96152	07397		12	7
96152	07398	5330-00-321-0982	12	8
96152	09196		12	15
59501	10-17966		12	3
92878	10534-01	5940-01-242-1706	9	40
92878	10662-03	4710-01-088-7508	10	7
			10	15
92878	10725-02		17	13
92878	10736-02		5	27
92878	10736-06		5	24
92878	10739-03		5	13
			5	14
92878	10766-12		5	30
92878	10767-05		5	18
92878	10767-09		5	17
92878	10768-12		2	7
			2	10
			3	7
92878	10770-01		17	12
92878	10770-23		5	9
			14	11
92878	10772-11		5	20
92878	10774-30		5	25
92878	10781-12		14	12
92878	10781-37		17	11
92878	10782-13		5	22
92878	10785-01		5	31
92878	10785-03		5	32
92878	10795-03		5	10
92878	10799		5	7
92878	10799-06		5	26
92878	10895-03		15	2
12204	117957		13	16
27264	1189-02-09-1103		2	4
			3	4
27264	1190-02-09-2103		3	13
			5	5
70485	1418		9	49
92878	168018		9	42

CROSS-REFERENCE INDEXES

FSCM	PART NUMBER	PART NUMBER INDEX STOCK NUMBER	FIG.	ITEM
92878	168025		18	2
92878	168046		4	27
92878	168052		18	12
92878	168053		18	9
92878	168059	7690-01-241-7476	9	52
92878	168102	4520-01-242-1645	10	2
			10	9
92878	168126		18	6
92878	168148		8	8
92878	168149		7	8
92878	168156	7690-01-242-1681	4	34
92878	168161	4520-01-238-3801	14	7
92878	168162		14	10
92878	168192		14	17
92878	168194		14	23
92878	168198	4520-01-242-1646	12	1
92878	168199		12	38
92878	168202		17	8
92878	168204	4520-01-242-1648	12	24
92878	168213		16	13
92878	168216		4	1
92878	168217		4	28
92878	168218		4	5
92878	168225		5	1
92878	168227		1	13
92878	168229		18	21
92878	168230		8	10
92878	168231-01		16	4
92878	168232		8	1
92878	168233		7	10
92878	168235		7	1
92878	168241		9	4
92878	168242		9	8
92878	168244-01		10	11
92878	168244-02		10	4
92878	168247		18	11
92878	168248		18	8
			18	14
			18	20
92878	168249		4	36
92878	168252		9	16
92878	168253		9	19
92878	168255		9	12
92878	168257		2	1
92878	16825701		3	1
92878	168263	4520-01-242-1647	12	17
92878	168271		4	14
92878	168287		16	19
92878	168288		16	24
92878	168289		13	17
92878	168294		14	5

CROSS-REFERENCE INDEXES

FSCM	PART NUMBER	PART NUMBER INDEX STOCK NUMBER	FIG.	ITEM
92878	168296		9	18
92878	168299		9	48
92878	168315		17	15
92878	168524	7690-01-242-1682	4	35
92878	168530		4	11
			9	7
92878	168615		15	8
			15	13
92878	168679		12	33
92878	168680		17	19
92878	168685		17	22
92878	168686		13	6
92878	168706	2910-01-206-8630	17	16
20832	17C0171-3		12	27
92878	170559		9	51
92878	170816	5910-01-085-6434	14	14
92878	2-168006		9	23
92878	2-168111		9	45
92878	2-168195		9	54
92878	2-168559		13	9
92878	2-168627	4530-01-085-9215	17	20
92878	2-168667		15	1
92878	2-168676		18	5
92878	2-168681	4520-01-087-9511	17	17
92878	2-48113-02		12	32
92878	2-68619		9	26
92878	2-68746		8	6
92878	2-68756		7	6
92878	2-68827-01		16	18
92878	2-68828	6150-00-351-3424	9	38
92878	2066	5305-01-085-3224	17	1
71286	212-12B-R		4	30
65029	26	5315-01-086-0602	6	1
71286	26R41-1-1AA	4520-01-242-1644	9	55
71286	26S8-2		4	31
71286	26S8-3	5325-00-726-6699	4	9
			7	2
			8	2
			9	5
			9	13
			9	24
71286	2600-LW	5310-00-337-8329	4	10
			4	32
			7	3
			9	6
			9	14
			9	25
92878	3050	5305-01-306-9863	14	6
			18	1
			18	3

CROSS-REFERENCE INDEXES

FSCM	PART NUMBER	PART NUMBER INDEX STOCK NUMBER	FIG.	ITEM
79470	3325X2	4730-00-278-3721	10	13
			12	16
00779	34070		5	11
			5	15
			5	21
			5	23
			16	22
01002	344X192 FB	5910-01-242-1658	16	9
81349	36T21	5930-01-085-3357	13	7
			13	15
13499	372-5909-720		2	3
			3	3
30780	4CB12B		10	14
			12	2
97539	4082	5975-00-201-8826	4	15
06402	45-700-IG1-P10-A 3-010		4	19
19207	454430		12	6
92878	47172		6	6
92878	47907		12	28
92878	49032		12	37
92878	49093	5330-01-087-8831	17	21
92878	49189		12	29
92878	49323		12	33
92878	49351-02	4720-01-085-4988	14	2
33095	51-717-007 8503		17	14
92878	5357	5930-00-909-8586	12	23
92878	5621	6105-00-104-4341	14	20
27877	568-006	5330-01-087-8827	12	30
92878	58620		9	33
92878	58621		9	32
53711	5979393-1	5305-01-256-8504	16	3
			16	10
01002	614A527P21		16	8
92878	65838		6	10
93061	68CA-4-2	4730-00-618-2952	10	6
92878	68072	5330-00-110-8745	18	4
92878	68313		4	13
92878	68330	4730-00-764-7353	10	5
			10	12
92878	68635-07		19	3
92878	68662-01		6	4
92878	68671-01		6	8
92878	68706		9	29
92878	68708-02	7690-01-241-7477	9	53
92878	68708-05	7690-01-242-1680	4	33
92878	68711	5360-01-085-3509	6	3
92878	68748		7	9
			8	9
92878	68751		8	5
92878	68754		6	12

CROSS-REFERENCE INDEXES

FSCM	PART NUMBER	PART NUMBER INDEX STOCK NUMBER	FIG.	ITEM
92878	68761		7	5
97539	7		4	16
55292	700-1-10-RA9X	6210-01-093-3202	4	8
55292	700-1-7-RA9X	6210-01-089-9866	4	7
92878	7520		10	16
92878	7521		17	18
24658	80861-45	5360-00-888-3289	6	7
62119	9481		16	7
96152	95-164	4520-00-534-6826	12	5

CROSS-REFERENCE INDEXES

FIG.	ITEM	FIGURE AND ITEM NUMBER INDEX		PART NUMBER
		STOCK NUMBER	FSCM	
BULK	1	6145-00-822-1425	99974	MM3412
BULK	2	6145-00-822-1425	99974	MM3412
BULK	3		81349	M16878/1BGE8
BULK	4	6145-00-542-6573	81349	M16878/1BJE4
BULK	5	6145-00-652-9307	81349	M16878/1BGE4
BULK	6		81349	M16878/1BJE1
BULK	7		81349	M16878/1BJE1
BULK	8		81349	M16878/1BJE0
BULK	9	6145-00-652-1441	81349	M16878/1BGE9
BULK	10		81349	M16878/1BGE3
BULK	11		81349	M16878/1BJE2
BULK	12		81349	M16878/1BGE8
BULK	13		81349	M16878/1BGE3
BULK	14		81349	M16878/1BJE3
BULK	15		81349	M16878/1BGE5
BULK	16		81349	M16878/1BGE5
BULK	17	6145-00-542-6573	81349	M16878/1BJE4
BULK	18	6145-00-643-0650	81349	M16878/1BJE9
BULK	19	6145-00-347-1171	81349	M16878/4BJE0
BULK	20	6145-00-643-0650	81349	M16878/1BJE9
BULK	21	6145-00-542-6573	81349	M16878/1BJE4
BULK	22		81349	M16878/1BGE7
1	1	5305-00-889-2997	96906	MS35206-215
1	2	5935-01-175-8419	96906	MS25043-18DA
1	3	5310-00-934-9739	96906	MS35649-242
1	4	5310-00-616-3554	96906	MS35335-29
1	5	5305-00-889-2997	96906	MS35206-215
1	6	5935-01-181-6651	96906	MS25043-14DA
1	7	5310-00-934-9739	96906	MS35649-242
1	8	5310-00-616-3554	96906	MS35335-29
1	9	5305-00-984-4984	96906	MS35206-227
1	10	5310-00-579-0079	96906	MS35333-37
1	11	5305-00-889-3001	96906	MS35206-231
1	12	5310-00-579-0079	96906	MS35333-37
1	13		92878	168227
2	1		92878	168257
2	2	5975-00-074-2072	96906	MS3367-1-9
2	3		13499	372-5909-720
2	4		27264	1189-02-09-1103
2	5	5935-01-305-2938	96906	MS3103-14S-9S
2	6	5940-00-204-8966	96906	MS25036-102
2	7		92878	10768-12
2	8	5935-01-306-2380	96906	MS3103-18-10P
2	9	5940-00-204-8966	96906	MS25036-102
2	10		92878	10768-12
2	11		14726	S05075
2	12		14726	S05363SFT
2	13	5940-00-926-0085	14726	S09718SF
2	14	5940-00-481-9089	59730	B14-250A
3	1		92878	16825701
3	2	5975-00-074-2072	96906	MS3367-1-9

CROSS-REFERENCE INDEXES

FIG.	ITEM	FIGURE AND ITEM NUMBER INDEX		PART NUMBER
		STOCK NUMBER	FSCM	
3	3		13499	372-5909-720
3	4		27264	1189-02-09-1103
3	5	5935-00-831-8733	96906	MS3100R-14S-9S
3	6	5940-00-204-8966	96906	MS25036-102
3	7		92878	10768-12
3	8	5935-01-085-4554	96906	MS3450W18-10P
3	9		14726	S05075
3	10		14726	S05363SFT
3	11	5940-00-926-0085	14726	S09718SF
3	12	5940-00-481-9089	59730	B14-250A
3	13		27264	1190-02-09-2103
3	14		27264	03-09-2092
4	1		92878	168216
4	2	5305-00-984-4988	96906	MS35206-228
4	3	5310-00-934-9747	96906	MS35649-262
4	4	5310-00-209-0788	96906	MS35335-30
4	5		92878	168218
4	6	5930-00-615-9376	96906	MS35059-21
4	7	6210-01-089-9866	55292	700-1-7-RA9X
4	8	6210-01-093-3202	55292	700-1-10-RA9X
4	9	5325-00-726-6699	71286	26S8-3
4	10	5310-00-337-8329	71286	2600-LW
4	11		92878	168530
4	12	5320-00-948-7332	96906	MS16535-115
4	13		92878	68313
4	14		92878	168271
4	15	5975-00-201-8826	97539	4082
4	16		97539	7
4	17	5925-00-682-4015	96906	MS25244-20
4	18	4520-01-242-7256	06402	N 1 480 08
4	19		06402	45-700-IG1-P10-A 3-010
4	20	5310-00-934-9747	96906	MS35649-262
4	21	5310-00-209-0788	96906	MS35335-30
4	22	5305-00-889-3000	96906	MS35206-230
4	23	5310-00-889-2708	96908	MS45904-54
4	24	5310-00-934-9739	96906	MS35649-242
4	25	5310-00-616-3554	96906	MS35335-29
4	26	5305-00-993-0190	96906	MS35206-214
4	27		92878	168046
4	28		92878	168217
4	29	5320-00-956-5737	96906	MS16535-54
4	30		71286	212-12B-R
4	31		71286	26S8-2
4	32	5310-00-337-8329	71286	2600-LW
4	33	7690-01-242-1680	92878	68708-05
4	34	7690-01-242-1681	92878	168156
4	35	7690-01-242-1682	92878	168524
4	36		92878	168249
5	1		92878	168225
5	2		78553	C-4980-A-4-35

CROSS-REFERENCE INDEXES

FIG.	ITEM	FIGURE AND ITEM NUMBER INDEX		PART NUMBER
		STOCK NUMBER	FSCM	
5	3	5975-00-074-2072	96906	MS3367-1-9
5	4		27264	03-09-2092
5	5		27264	1190-02-09-2103
5	6	5940-00-926-0085	14726	S09718SF
5	7		92878	10799
5	8	5940-00-926-0085	14726	S09718SF
5	9		92878	10770-23
5	10		92878	10795-03
5	11		00779	34070
5	12	5940-00-926-0085	14726	S09718SF
5	13		92878	10739-03
5	14		92878	10739-03
5	15		00779	34070
5	16	5940-00-143-4780	96906	MS25036-108
5	17		92878	10767-09
5	18		92878	10767-05
5	19	5940-00-143-4780	96906	MS25036-108
5	20		92878	10772-11
5	21		00779	34070
5	22		92878	10782-13
5	23		00779	34070
5	24		92878	10736-06
5	25		92878	10774-30
5	26		92878	10799-06
5	27		92878	10736-02
5	28		96906	MS3103-14S7S
5	29		96906	MS3100R-14S-7S
5	30		92878	10766-12
5	31		92878	10785-01
5	32		92878	10785-03
5	33	5940-00-204-8966	96906	MS25036-102
6	1	5315-01-086-0602	65029	26
6	2	5310-00-983-8483	96906	MS27183-5
6	3	5360-01-085-3509	92878	68711
6	4		92878	68662-01
6	5	5315-00-005-0442	96906	MS24665-285
6	6		92878	47172
6	7	5360-00-888-3289	24658	80861-45
6	8		92878	68671-01
6	9	5305-00-068-0502	96906	MS90725-6
6	10		92878	65838
6	11	5310-00-088-1251	96906	MS51922-1
6	12		92878	68754
7	1		92878	168235
7	2	5325-00-726-6699	71286	26S8-3
7	3	5310-00-337-8329	71286	2600-LW
7	4	5320-00-060-5385	96906	MS16535-133
7	5		92878	68761
7	6		92878	2-68756
7	7	5320-00-948-7332	96906	MS16535-115
7	8		92878	168149

CROSS-REFERENCE INDEXES

FIG.	ITEM	FIGURE AND ITEM NUMBER INDEX		PART NUMBER
		STOCK NUMBER	FSCM	
7	9		92878	68748
7	10		92878	168233
8	1		92878	168232
8	2	5325-00-726-6699	71286	26S8-3
8	3	5310-00-337-8329	71286	2600-LW
8	4	5320-00-060-5385	96906	MS16535-133
8	5		92878	68751
8	6		92878	2-68746
8	7	5320-00-948-7332	96906	MS16535-115
8	8		92878	168148
8	9		92878	68748
8	10		92878	168230
9	1	5305-00-984-6208	96906	MS35206-261
9	2	5310-00-934-9758	96906	MS35649-202
9	3	5310-00-576-5752	96906	MS35333-39
9	4		92878	168241
9	5	5325-00-726-6699	71286	26S8-3
9	6	5310-00-337-8329	71286	2600-LW
9	7		92878	168530
9	8		92878	168242
9	9	5305-00-984-6208	96906	MS35206-261
9	10	5310-00-934-9758	96906	MS35649-202
9	11	5310-00-576-5752	96906	MS35333-39
9	12		92878	168255
9	13	5325-00-726-6699	71286	26S8-3
9	14	5310-00-337-8329	71286	2600-LW
9	15	5320-00-060-5385	96906	MS16535-133
9	16		92878	168252
9	17	5320-00-060-5385	96906	MS16535-133
9	18		92878	168296
9	19		92878	168253
9	20	5305-00-984-6208	96906	MS35206-261
9	21	5310-00-934-9758	9696	MS35649-202
9	22	5310-00-576-5752	96906	MS35333-39
9	23		92878	2-168006
9	24	5325-00-726-6699	71286	26S8-3
9	25	5310-00-337-8329	71286	2600-LW
9	26		92878	2-68619
9	27	5305-00-984-6208	96906	MS35206-261
9	28	5310-00-576-5752	96906	MS35333-39
9	29		92878	68706
9	30	5305-00-068-0500	96906	MS90725-3
9	31	5310-00-550-1130	96906	MS35333-40
9	32		92878	58621
9	33		92878	58620
9	34	5305-00-068-0500	96906	MS90725-3
9	35	5310-00-209-0786	96906	MS35335-33
9	36	5305-00-068-0501	96906	MS90725-5
9	37	5310-00-209-0786	96906	MS35335-33
9	38	6150-00-351-3424	92878	2-68828
9	39		14726	R3458BT

CROSS-REFERENCE INDEXES

FIG.	ITEM	FIGURE AND ITEM NUMBER INDEX		PART NUMBER
		STOCK NUMBER	FSCM	
9	40	5940-01-242-1706	92878	10534-01
9	41	5310-00-889-2528	96906	MS45904-68
9	42		92878	168018
9	43	5305-00-068-0500	96906	MS90725-3
9	44	5310-00-209-0786	96906	MS35335-33
9	45		92878	2-168111
9	46	5305-00-984-6208	96906	MS35206-261
9	47	5310-00-576-5752	96906	MS35333-39
9	48		92878	168299
9	49		70485	1418
9	50	5320-01-004-0238	10054	SB4-2
9	51		92878	170559
9	52	7690-01-241-7476	92878	168059
9	53	7690-01-241-7477	92878	68708-02
9	54		92878	2-168195
9	55	4520-01-242-1644	71286	26R41-1-1AA
10	1	5305-00-889-3002	96906	MS35206-242
10	2	4520-01-242-1645	92878	168102
10	3	5310-00-559-0070	96906	MS35333-38
10	4		92878	168244-02
10	5	4730-00-764-7353	92878	68330
10	6	4730-00-618-2952	93061	68CA-4-2
10	7	4710-01-088-7508	92878	10662-03
10	8	5305-00-889-3002	96906	MS35206-242
10	9	4520-01-242-1645	92878	168102
10	10	5310-00-559-0070	96906	MS35333-38
10	11		92878	168244-01
10	12	4730-00-764-7353	92878	68330
10	13	4730-00-278-3721	79470	3325X2
10	14		30780	4CB12B
10	15	4710-01-088-7508	92878	10662-03
10	16		92878	7520
10	17	5310-00-596-7691	96906	MS35335-32
11	1	2910-00-905-9792	96906	MS51086-1
11	2		19207	A5277290
11	3		79960	F10X3
11	4		79960	F8X56
11	5	5330-00-888-4991	79960	FIX38
11	6	2910-00-652-4446	79960	F2X79T3
11	7		79960	F7X184
12	1	4520-01-242-1646	92878	168198
12	2		30780	4CB12B
12	3		59501	10-17966
12	4		96152	013440
12	5	4520-00-534-6826	96152	95-164
12	6		19207	454430
12	7		96152	07397
12	8	5330-00-321-0982	96152	07398
12	9		96152	0700
12	10		96152	013441
12	11	4520-00-962-1048	96152	013443

CROSS-REFERENCE INDEXES

FIG.	ITEM	FIGURE AND ITEM NUMBER INDEX		PART NUMBER
		STOCK NUMBER	FSCM	
12	12		96152	012642
12	13		96152	012643
12	14		96152	012641
12	15		96152	09196
12	16	4730-00-278-3721	79470	3325X2
12	17	4520-01-242-1647	92878	168263
12	18	5940-01-139-0853	14726	S05076
12	19		14726	S05363SFT
12	20		01692	SC37178
12	21	5305-00-984-4983	96906	MS35206-226
12	22	5310-00-579-0079	96906	MS35333-37
12	23	5930-00-909-8586	92878	5357
12	24	4520-01-242-1648	92878	168204
12	25	5940-01-139-0853	14726	S05076
12	26		96906	MS9021-005
12	27		20832	17C0171-3
12	28		92878	47907
12	29		92878	49189
12	30	5330-01-087-8827	27877	568-006
12	31	5330-00-166-0994	81349	M83248/1-018
12	32		92878	2-48113-02
12	33		92878	168679
12	33		92878	49323
12	35	5305-00-984-4983	96906	MS35206-226
12	36	5310-00-579-0079	96906	MS35333-37
12	37		92878	49032
12	38		92878	168199
13	1	5305-00-889-3002	96906	MS35206-242
13	2	5310-00-559-0070	96906	MS35333-38
13	3	5305-00-984-4984	96906	MS35206-227
13	4	5310-00-934-9747	96906	MS35649-262
13	5	5310-00-579-0079	96906	MS35333-37
13	6		92878	168686
13	7	5930-01-085-3357	81439	36T21
13	8	5325-00-276-4993	05624	AYRZ14
13	9		92878	2-168559
13	10	5305-00-889-3002	96906	MS35206-242
13	11	5310-00-559-0070	96906	MS35333-38
13	12	5305-00-984-4984	96906	MS35206-227
13	13	5310-00-934-9747	96906	MS35649-262
13	14	5310-00-579-0079	96906	MS35333-37
13	15	5930-01-085-3357	81439	36T21
13	16		12204	117957
13	17		92878	168289
14	1	4730-00-908-3194	96906	MS35842-11
14	2	4720-01-085-4988	92878	49351-02
14	3	5305-00-071-2233	96906	MS90725-18
14	4	5310-00-550-1130	96906	MS35333-40
14	5		92878	168294
14	6	5305-01-306-9863	92878	3050
14	7	4520-01-238-3801	92878	168161

CROSS-REFERENCE INDEXES

FIG.	ITEM	FIGURE AND ITEM NUMBER INDEX		PART NUMBER
		STOCK NUMBER	FSCM	
14	8	5305-00-855-0972	96906	MS24629-23
14	9	5310-00-579-0079	96906	MS35333-37
14	10		92878	168162
14	11		92878	10770-23
14	12		92878	10781-12
14	13	5940-01-139-0853	14726	S05076
14	14	5910-01-085-6434	92878	170816
14	15	5305-00-984-6210	96906	MS35206-263
14	16	5310-00-576-5752	96906	MS35333-39
14	17		92878	168192
14	18		14726	B1870BNT
14	19	5975-00-074-2072	96906	MS3367-1-9
14	20	6105-00-104-4341	92878	5621
14	21	5305-00-855-0957	96906	MS24629-46
14	22	5310-00-576-5752	96906	MS35333-39
14	23		92878	168194
15	1		92878	2-168667
15	2		92878	10895-03
15	3		92878	M4402
15	4		92878	M4406-1
15	5		92878	M4386-4
15	6		92878	M4418
15	7		92878	M4094
15	8		92878	168615
15	9		92878	M4349-3
15	10		92878	M4084
15	11		92878	M4085
15	12		92878	M4423-4
15	13		92878	168615
15	14		92878	M4417-1
15	15		92878	M4080
15	16		92878	M4081
15	17		92878	M4092
15	18		92878	M4091-1
15	19		92878	M4081
15	20		92878	M4095
16	1	5305-00-988-1725	96906	MS35206-281
16	2	5310-00-067-6357	96906	MS45904-69
16	3	5305-01-256-8504	53711	5979393-1
16	4		92878	168231-01
16	5	5310-00-761-6882	96906	MS51967-2
16	6	5310-00-550-1130	96906	MS35333-40
16	7		62119	9481
16	8		01002	614A527P21
16	9	5910-01-242-1658	01002	344X192 FB
16	10	5305-01-256-8504	53711	5979393-1
16	11	5310-00-761-6882	96906	MS51967-2
16	12	5310-00-550-1130	96906	MS35333-40
16	13		92878	168213
16	14		60399	N-1016-3
16	15	5305-00-724-5812	96906	MS51964-65

CROSS-REFERENCE INDEXES

FIG.	ITEM	FIGURE AND ITEM NUMBER INDEX		PART NUMBER
		STOCK NUMBER	FSCM	
16	16	5310-00-811-3494	96906	MS21044-N08
16	17	5310-00-596-7693	96906	MS35335-31
16	18		92878	2-68827-01
16	19		92878	168287
16	20	5940-00-481-9089	59730	B14-250A
16	21	5940-01-139-0853	14726	SO5076
16	22		00779	34070
16	23		62119	FHIL
16	24		92878	168288
17	1	5305-01-085-3224	92878	2066
17	2	5340-00-103-2900	78553	C4886-S-5-24D
17	3	5310-00-934-9747	96906	MS35649-262
17	4	5310-00-209-0788	96906	MS35335-30
17	5	5310-00-761-6882	96906	MS51967-2
17	6	5310-00-209-0786	96906	MS35335-33
17	7	5310-00-809-4058	96906	MS27183-10
17	8		92878	168202
17	9		78553	C-4980-A-4-35
17	10	5940-01-139-0853	14726	SO5076
17	11		92878	10781-37
17	12		92878	10770-01
17	13		92878	10725-02
17	14		33095	51-717-007 8503
17	15		92878	168315
17	16	2910-01-206-8630	92878	168706
17	17	4520-01-087-9511	92878	2-168681
17	18		92878	7521
17	19		92878	168680
17	20	4530-01-085-9215	92878	2-168627
17	21	5330-01-087-8831	92878	49093
17	22		92878	168685
18	1	5305-01-306-9863	92878	3050
18	2		92878	168025
18	3	5305-01-306-9863	92878	3050
18	4	5330-00-110-8745	92878	68072
18	5		92878	2-168676
18	6		92878	168126
18	7	5320-00-582-3276	96906	MS20600-AD6W4
18	8		92878	168248
18	9		92878	168053
18	10	5320-00-582-3276	96906	MS20600-AD6W4
18	11		92878	168247
18	12		92878	168052
18	13	5320-00-582-3276	96906	MS20600-AD6W4
18	14		92878	168248
18	15	5320-00-582-3276	96906	MS20600-AD6W4
18	16	5305-00-984-6210	96906	MS35206-263
18	17	5310-00-596-7691	96906	MS35335-32
18	18	5340-00-809-1492	96906	MS21333-100
18	19	5310-00-934-9747	96906	MS35649-262
18	20		92878	168248

CROSS-REFERENCE INDEXES

FIG.	ITEM	FIGURE AND ITEM NUMBER INDEX		PART NUMBER
		STOCK NUMBER	FSCM	
18	21		92878	168229
19	1	5305-00-984-6208	96906	MS35206-261
19	2	5310-00-576-5752	96906	MS35333-39
19	3		92878	68635-07
19	4	5935-00-626-3102	96906	MS3456W14S7P
19	5	5935-01-014-3302	96906	MS3106F14S-9P
19	6		96906	MS3456W18-10S
19	7		92578	A19BAE-1
19	8	2910-00-710-6054	96906	MS51321-1

By Order of the Secretary of the Army:

CARL E. VUONO
General, United States Army
Chief of Staff

Official:

WILLIAM J. MEEHAN, II
Brigadier General, United States Army
The Adjutant General

DISTRIBUTION:

To be distributed in accordance with DA Form 12-25E, Unit, Direct Support and General Support Maintenance requirements for Heater, Space (UH68G).

RECOMMENDED CHANGES TO EQUIPMENT TECHNICAL PUBLICATIONS

SOMETHING WRONG WITH THIS PUBLICATION?



THEN... JOT DOWN THE DOPE ABOUT IT ON THIS FORM. CAREFULLY TEAR IT OUT. FOLD IT AND DROP IT IN THE MAIL!

FROM: (PRINT YOUR UNIT'S COMPLETE ADDRESS)

PFC JOHN DOE
COA, 3d ENGINEER BN
FT. LEONARD WOOD, MO 63108

DATE SENT

PUBLICATION NUMBER

TM 5-4520-253-23P

PUBLICATION DATE

10 July 1990

PUBLICATION TITLE Heater, Space,
Multifuel with Blower

BE EXACT PIN-POINT WHERE IT IS

PAGE NO	PARA-GRAPH	FIGURE NO	TABLE NO
---------	------------	-----------	----------

6

2-1
a

B1

4-3

125

line 20

IN THIS SPACE TELL WHAT IS WRONG AND WHAT SHOULD BE DONE ABOUT IT:

In line 6 of paragraph 2-1a the manual states the engine has 6 cylinders. The engine on my set only has 4 cylinders. Change the manual to show 4 cylinders.

Callout 16 on figure 4-3 is pointing at a bolt. In key to figure 4-3, item 16 is called a shim - Please correct one or the other.

I ordered a gasket, item 19 on figure B-16 by NSN 2910-00-762-3001. I got a gasket but it doesn't fit. Supply says I got what I ordered, so the NSN is wrong. Please give me a good NSN

PRINTED NAME GRADE OR TITLE AND TELEPHONE NUMBER

JOHN DOE, PFC (268) 317-7111

SIGN HERE

JOHN DOE

DA FORM 1 JUL 79 2028-2

PREVIOUS EDITIONS ARE OBSOLETE.
DRSTS-M Overprint 1, 1 Nov 80

PS - IF YOUR OUTFIT WANTS TO KNOW ABOUT YOUR RECOMMENDATION MAKE A CARBON COPY OF THIS AND GIVE IT TO YOUR HEADQUARTERS

TEAR ALONG PERFORATED LINE

RECOMMENDED CHANGES TO EQUIPMENT TECHNICAL PUBLICATIONS



THEN... JOT DOWN THE DOPE ABOUT IT ON THIS FORM. CAREFULLY TEAR IT OUT. FOLD IT AND DROP IT IN THE MAIL!

SOMETHING WRONG WITH THIS PUBLICATION?

FROM (PRINT YOUR UNIT'S COMPLETE ADDRESS)

DATE SENT

PUBLICATION NUMBER

TM 5-4520-253-23P

PUBLICATION DATE

10 July 1990

PUBLICATION TITLE Heater, Space, Multifuel with Blower

BE EXACT PIN-POINT WHERE IT IS

PAGE NO

PARA-GRAPH

FIGURE NO

TABLE NO

IN THIS SPACE TELL WHAT IS WRONG AND WHAT SHOULD BE DONE ABOUT IT:

TEAR ALONG PERFORATED LINE

PRINTED NAME GRADE OR TITLE AND TELEPHONE NUMBER

SIGN HERE

DA FORM 1 JUL 79 2028-2

PREVIOUS EDITIONS ARE OBSOLETE.
DRSTS-M Overprint 2, 1 Nov 80.

PS --IF YOUR OUTFIT WANTS TO KNOW ABOUT YOUR RECOMMENDATION MAKE A CARBON COPY OF THIS AND GIVE IT TO YOUR HEADQUARTERS

The Metric System and Equivalents

Linear Measure

1 centimeter = 10 millimeters = .39 inch
 1 decimeter = 10 centimeters = 3.94 inches
 1 meter = 10 decimeters = 39.37 inches
 1 dekameter = 10 meters = 32.8 feet
 1 hectometer = 10 dekameters = 328.08 feet
 1 kilometer = 10 hectometers = 3,280.8 feet

Weights

1 centigram = 10 milligrams = .15 grain
 1 decigram = 10 centigrams = 1.54 grains
 1 gram = 10 decigrams = .035 ounce
 1 dekagram = 10 grams = .35 ounce
 1 hectogram = 10 dekagrams = 3.52 ounces
 1 kilogram = 10 hectograms = 2.2 pounds
 1 quintal = 100 kilograms = 220.46 pounds
 1 metric ton = 10 quintals = 1.1 short tons

Liquid Measure

1 centiliter = 10 milliliters = .34 fl. ounce
 1 deciliter = 10 centiliters = 3.38 fl. ounces
 1 liter = 10 deciliters = 33.81 fl. ounces
 1 dekaliter = 10 liters = 2.64 gallons
 1 hectoliter = 10 dekaliters = 26.42 gallons
 1 kiloliter = 10 hectoliters = 264.18 gallons

Square Measure

1 sq. centimeter = 100 sq. millimeters = .155 sq. inch
 1 sq. decimeter = 100 sq. centimeters = 15.5 sq. inches
 1 sq. meter (centare) = 100 sq. decimeters = 10.76 sq. feet
 1 sq. dekameter (are) = 100 sq. meters = 1,076.4 sq. feet
 1 sq. hectometer (hectare) = 100 sq. dekameters = 2.47 acres
 1 sq. kilometer = 100 sq. hectometers = .386 sq. mile

Cubic Measure

1 cu. centimeter = 1000 cu. millimeters = .06 cu. inch
 1 cu. decimeter = 1000 cu. centimeters = 61.02 cu. inches
 1 cu. meter = 1000 cu. decimeters = 35.31 cu. feet

Approximate Conversion Factors

To change	To	Multiply by	To change	To	Multiply by
inches	centimeters	2.540	ounce-inches	newton-meters	.007062
feet	meters	.305	centimeters	inches	.394
yards	meters	.914	meters	feet	3.280
miles	kilometers	1.609	meters	yards	1.094
square inches	square centimeters	6.451	kilometers	miles	.621
square feet	square meters	.093	square centimeters	square inches	.155
square yards	square meters	.836	square meters	square feet	10.764
square miles	square kilometers	2.590	square meters	square yards	1.196
acres	square hectometers	.405	square kilometers	square miles	.386
cubic feet	cubic meters	.028	square hectometers	acres	2.471
cubic yards	cubic meters	.765	cubic meters	cubic feet	35.315
fluid ounces	milliliters	29.573	cubic meters	cubic yards	1.308
pints	liters	.473	milliliters	fluid ounces	.034
quarts	liters	.946	liters	pints	2.113
gallons	liters	3.785	liters	quarts	1.057
ounces	grams	28.349	liters	gallons	.264
pounds	kilograms	.454	grams	ounces	.035
short tons	metric tons	.907	kilograms	pounds	2.205
pound-feet	newton-meters	1.356	metric tons	short tons	1.102
pound-inches	newton-meters	.11296			

Temperature (Exact)

°F	Fahrenheit temperature	5/9 (after subtracting 32)	Celsius temperature	°C
----	------------------------	----------------------------	---------------------	----

PIN: 061885-000